

6911 Southpoint Drive (B03)
Burnaby, BC
V3N 4X8

July 30, 2024

[REDACTED]
[REDACTED]
[REDACTED]
[REDACTED]
[REDACTED]
[REDACTED]
[REDACTED]

RE: CEAP IR 27 - Hourglass Wind Energy Centre Project - Interconnection Feasibility Study Report

Enclosed is the Interconnection Feasibility study report for the proposed Hourglass Wind Energy Centre Project submitted under Attachment M-2: Transmission Service and Interconnection Service Procedures for Competitive Electricity Acquisition Process (CEAP) of the Open Access Transmission Tariff (OATT). This letter provides a non-binding good faith estimate of the cost and time to construct the facilities required to interconnect your project to BC Hydro's Transmission System, being the Network Upgrades, based on the findings of the Interconnection Feasibility study.

Open Access Transmission Tariff

The OATT defines Network Upgrades as additions, modifications, and upgrades to BC Hydro's Transmission System required at or beyond the Point of Interconnection to accommodate the interconnection of the Generating Facility to the BC Hydro's Transmission System. Pursuant to the OATT, BC Hydro will design, procure, construct, install, and own the Network Upgrades. While BC Hydro will pay the costs for the Network Upgrades, the Interconnection Customer provides security for such costs.

Cost Estimate

Based on the Interconnection Feasibility study, the non-binding good faith estimated cost (typical accuracy range of +150%/-50%) for Network Upgrades required to interconnect your project is \$128.0 M.

Major Scope of Work Identified:

- Expand the substation and extend the existing 230kV bus structure at BC Hydro Tumbler Ridge (TLR) substation
- Construct one 230kV line position at TLR
- Supply and install associated substation equipment at TLR
- Conduct other associated station work TLR
- Upgrade 2L313 line drops at BC Hydro Sukunka (SNK) substation and BC Hydro Meikle Wind Terminal (MKT) station.
- Thermal upgrade (reconductor) 31km of transmission line 2L313
- Supply and install protection relays and other required protection equipment
- Other Telecom and Protection work, as required

Exclusions:

- GST
- Right-of-Way
- Permits

Key Assumptions:

- Construction will be done by contractor
- Early Engineering and Procurement
- 3 years of construction
- Both station and control building will be expanded
- No ground improvements will be required
- No contaminated soil will be encountered during construction
- No piles will be required for construction
- A Certificate of Public Convenience and Necessity (CPCN) requirement will not impact the schedule

Key Risks:

- More transmissions structures may require replacement for thermal upgrade
- Expansion of the existing control building may be required leading to increased costs and/or a longer project schedule
- Additional right of way or acquisition of more property may be required
- No defined supply chain strategy, construction costs may increase depending on delivery method
- Cost of construction may increase based on geotechnical condition of the actual project site
- Project schedule may be longer than expected, leading to increased costs
- Costs may be affected by market conditions and escalation
- A CPCN requirement may delay the project schedule and increase costs

Please note that the Revenue Metering requirements and associated costs required to interconnect your project have not been determined at this stage and, therefore, not included in the above estimate. Revenue Metering costs that are attributable to the Interconnection Customer are to be paid in cash. For more details on Revenue Metering requirements and responsibilities, please refer to:

<https://www.bchydro.com/content/dam/BCHydro/customer-portal/documents/distribution/standards/ds-rmr-complex-revenue-metering.pdf>.

Schedule

Based on the Interconnection Feasibility study, the non-binding good faith estimated in-service date for your project's Network Upgrades is Quarter 4, 2030 (calendar year). To achieve this timeline, we may need to expedite certain activities, including engineering design and procurement of long-lead equipment.

Timely actions required from you to minimize risks to the schedule:

- Submission of additional technical data required for the System Impact Study and Facilities Study
- Submission of any required information or document such as demonstration of Site Control
- Execution of Combined Study Agreement and Standard Generator Interconnection Agreement
- Financial commitments and securities

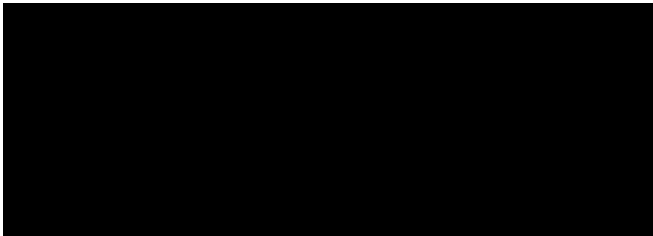
Please note that changes to your interconnection request, delays in data submission, or financial commitments may also impact the target in-service date.

Next Steps

In September 2024, we will issue a final invoice for the Feasibility Study costs. This invoice will reflect the total amount due, taking into account the \$15,000 Feasibility Study deposit you have already paid and any remaining amount on the non-refundable \$15,000 Interconnection request deposit that we did not spend in reviewing and validating your interconnection request.

If you have any questions, please contact the BC Hydro CEAP Team at ceap2024@bchydro.com.

Sincerely,



Senior Manager, Transmission Interconnections

BC Hydro

Encl.: CEAP2024_IR_27_Hourglass Wind Energy Centre_FeS_Report_final.pdf



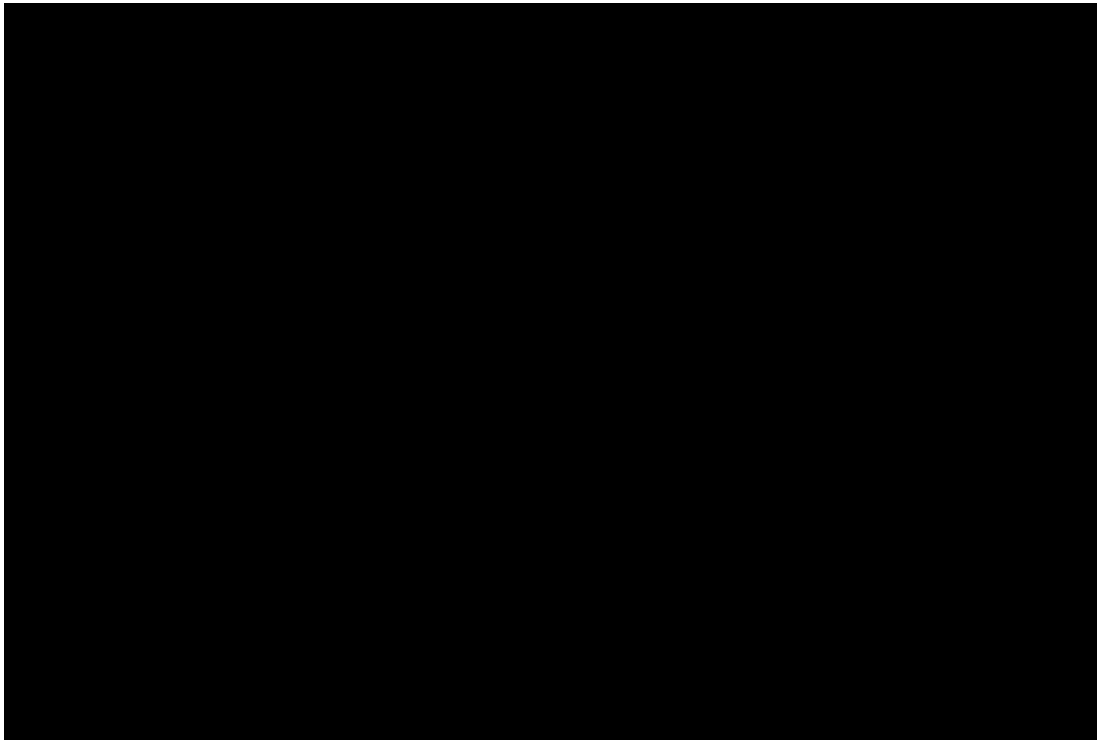
Hourglass Wind Energy Centre Project

Interconnection Feasibility Study

BC Hydro EGBC Permit to Practice No: 1002449

2024 CEAP IR # 27

Prepared for:





Report Metadata

Header: Hourglass Wind Energy Centre Project
Subheader: Interconnection Feasibility Study
Title: Hourglass Wind Energy Centre Project
Subtitle: 2024 CEAP IR # 27
Report Number: 1000-APR-00018
Revision: 0
Confidentiality: Public
Date: 2024 Jul 30
Volume: 1 of 1

Prepared for: [Redacted]
[Redacted]
[Redacted]
[Redacted]
[Redacted]
[Redacted]
[Redacted]

Related Facilities: Tumbler Ridge (TLR) 230kV substation
Additional Metadata: Transmission Planning 2024-048
Filing Subcode 1350



Revisions

Revision	Date	Description
0	2024 Jul	Initial release



Disclaimer of Warranty, Limitation of Liability

This report was prepared solely for internal purposes. All parties other than BC Hydro are third parties.

BC Hydro does not represent, guarantee or warrant to any third party, either expressly or by implication:

any information, product or process disclosed, described or recommended in this report.

BC Hydro does not accept any liability of any kind arising in any way out of the use by a third party of any information, product or process disclosed, described or recommended in this report, nor does BC Hydro accept any liability arising out of reliance by a third party upon any information, statements or recommendations contained in this report. Should third parties use or rely on any information, product or process disclosed, described or recommended in this report, they do so entirely at their own risk.

This report was prepared by the British Columbia Hydro And Power Authority ("BCH") or, as the case may be, on behalf of BCH by persons or entities including, without limitation, persons or entities who are or were employees, agents, consultants, contractors, subcontractors, professional advisers or representatives of, or to, BCH (individually and collectively, "BCH Personnel").

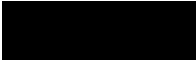
This report is to be read in the context of the methodology, procedures and techniques used, BCH's or BCH's Personnel's assumptions, and the circumstances and constraints under which BCH's mandate to prepare this report was performed. This report is written solely for the purpose expressly stated in this report, and for the sole and exclusive benefit of the person or entity who directly engaged BCH to prepare this report. Accordingly, this report is suitable only for such purpose, and is subject to any changes arising after the date of this report. This report is meant to be read as a whole, and accordingly no section or part of it should be read or relied upon out of context.

Unless otherwise expressly agreed by BCH:

- (a) any assumption, data or information (whether embodied in tangible or electronic form) supplied by, or gathered from, any source (including, without limitation, any consultant, contractor or subcontractor, testing laboratory and equipment suppliers, etc.) upon which BCH's opinion or conclusion as set out in this report is based (individually and collectively, "Information") has not been verified by BCH or BCH's Personnel; BCH makes no representation as to its accuracy or completeness and disclaims all liability with respect to the Information;
- (b) except as expressly set out in this report, all terms, conditions, warranties, representations and statements (whether express, implied, written, oral, collateral, statutory or otherwise) are excluded to the maximum extent permitted by law and, to the extent they cannot be excluded, BCH disclaims all liability in relation to them to the maximum extent permitted by law;
- (c) BCH does not represent or warrant the accuracy, completeness, merchantability, fitness for purpose or usefulness of this report, or any information contained in this report, for use or consideration by any person or entity. In addition, BCH does not accept any liability arising out of reliance by a person or entity on this report, or any information contained in this report, or for any errors or omissions in this report. Any use, reliance or publication by any person or entity of this report or any part of it is at their own risk; and
- (d) In no event will BCH or BCH's Personnel be liable to any recipient of this report for any damage, loss, cost, expense, injury or other liability that arises out of or in connection with this report including, without limitation, any indirect, special, incidental, punitive or consequential loss, liability or damage of any kind.

Copyright Notice

Copyright and all other intellectual property rights in, and to, this report are the property of, and are expressly reserved to, BCH. Without the prior written approval of BCH, no part of this report may be reproduced, used or distributed in any manner or form whatsoever.



Executive Summary

the interconnection customer (IC), requests to interconnect its Hourglass Wind Energy Centre Project (2024 CEAP IR # 27) to the BC Hydro (BCH) system. Hourglass Wind Energy Centre Project has thirty-four (34) Type 4 wind turbine generators with total installed capacity of 210.8 MW and a maximum power injection of 200 MW into the BC Hydro system at the POI. The proposed Point of Interconnection (POI) is on BC Hydro’s Tumbler Ridge (TLR) 230 kV substation. The IC’s project will connect to the POI via a 35 km 230 kV interconnection line. The IC’s proposed commercial operation date (COD) is Oct 1, 2030.

To interconnect the Hourglass Wind Energy Centre Project and its facilities to the BCH Transmission System at the proposed POI, this Feasibility Study has identified the following conclusions and requirements:



1. A new 230 kV line position at TLR is required to interconnect the IC’s generating project to the BC Hydro system.
2. The connection of Hourglass Wind Energy Centre Project will cause 2L313 thermal overload under system normal conditions. Thermal upgrade of the line for these three sections are required. The required minimum ratings are as follows.

Circuit	Circuit Section Terminals		Limiting Section Type	Existing rating		New minimum rating requirement	
	A	B		Summer normal (30° C)		Summer normal (30° C)	
				A	MVA	A	MVA
2L313	SNK	KGP Tap	Overhead	1082	431	1320	526
2L313	KGP Tap	MNK Tap	Overhead	1082	431	1320	526
2L313	MNK Tap	MKT	Overhead	1073	427	1320	526

3. The connection of the Hourglass Wind Energy Centre project will exacerbate the existing overloads on 2L308 or 2L312, and cause new overloads on 2L309, GMS T13 or GMS T14 under single contingencies (2L308, 2L309, 2L312, SGB 2CB6, SGB 2CB7, SLS 2CB11, SLS 2CB12, SLS 2CB14, DKT 2CB2, DKT 2CB3, DKT 2CB4, SNK 2CB1, or SNK



2CB12). The existing Peace Region Local Gen-shedding RAS will continue to be relied upon to mitigate these overloads and Hourglass Wind Energy Centre will need to participate in the RAS. In addition, new contingencies, SGB 2CB6, SGB 2CB7, or SLS 2CB14 shall be added in Peace Region Local Gen-shedding RAS. The exact requirements will be determined in subsequent studies if the project proceeds.

4. Hourglass Wind Energy Centre Project may be islanded with other generations and BC Hydro loads in the area after certain contingencies which may result in over-voltages. The IC's project is required to participate in the existing peace region anti-islanding direct transfer trip (DTT) scheme. A list of contingencies is provided in Section  . In addition, as a back up the IC is required to install anti-islanding protection within their facility to disconnect the IC's wind farm when an inadvertent island with the local load forms.

5. Transmission line requirement

Thermally upgrade the overhead circuit 2L313 (SNK to KGP Tap, KGP Tap to MNK Tap, MNK Tap to MKT) from existing 1082 Amps to required 1320 Amps (30°C ambient summer Temperature) by changing from the existing SP 927.2 ASC to new ASC Columbine (at 90°C conductor temperature, 30°C ambient summer Temperature) with structure replacements required.

6. BC Hydro will provide line protection for 2LXXX protection (BC Hydro end only). As part of the new line protection, telecommunication facilities will be required to accommodate the new protection schemes. The IC shall provide required relays, telecom facility and associated equipment at its facilities to accommodate the new protection schemes.

The above conclusions are made based on the IC's input data and study assumptions listed in Section 4, which represent the best available information on May 22, 2024.

A non-binding good faith estimated cost and time to construct the Network Upgrades required to interconnect the proposed project will be provided in a separate letter to the IC.



Contents

Executive Summary	vii
1 Introduction	1
2 Purpose and Scopes of Study	4
3 Standard and Criteria	5
4 Assumptions and Conditions	6
5 System Studies and Results	7
5.1 Power Flow Study Results	7
5.1.1 Branch Loading Analysis	7
5.1.2 Steady-State Voltage Analysis	9
5.1.3 Reactive Power Capability Evaluation	11
5.1.4 Anti-Islanding Requirements	11
5.2 Fault Analysis	12
5.3 Stations Requirements	12
5.4 Transmission Line Requirements	13
5.5 Protection & Control Requirements	13
5.6 Telecommunications Requirements	14
6 Cost Estimate and Schedule	15
7 Conclusions	16

Appendices

Appendix A	Plant Single Line Diagram Used for Power Flow Study
Appendix B	One-Line Sketch of Upgrades at TLR Substation



Acronyms

The following are acronyms used in this report.

BCH	BC Hydro
CEAP	Competitive Electricity Acquisition Process
COD	Commercial Operation Date
DTT	Direct Transfer Trip
ERIS	Energy Resource Interconnection Service
FeS	Feasibility Study
IBR	Inverter-Based Resources
IC	Interconnection Customer
LAPS	Local Area Protection Schemes
MPO	Maximum Power Output
NERC	North American Electric Reliability Corporation
NRIS	Network Resource Interconnection Service
OATT	Open Access Transmission Tariff
POI	Point of Interconnection
RAS	Remedial Action Scheme
TIR	BC Hydro “60 KV to 500 kV Technical Interconnection Requirements for Power Generators”
WECC	Western Electricity Coordinating Council
WTG	Wind Turbine Generator
FVO	Fraser Valley Office
SIO	South Interior Office
TLR	Tumbler Ridge



1 Introduction

Table 1-1 below summarizes the project reviewed in this Feasibility Study.

Table 1-1 Summary of Project Information

Project Name	Hourglass Wind Energy Centre Project	
Name of Interconnection Customer (IC)	[REDACTED]	
Point of Interconnection (POI)	Tumbler Ridge (TLR) 230kV	
IC's Proposed COD	1st October 2030	
Type of Interconnection Service	NRIS <input checked="" type="checkbox"/>	ERIS <input type="checkbox"/>
Maximum Power Injection ¹ (MW)	200 MW (Summer)	200 MW (Winter)
Number of Generator Units	34 x 6.2 MW WTGs	
Plant Fuel	Wind	
Note 1: The maximum achievable power injection at the POI is approx. 200 MW after accounting for MW losses and service load which is the same as the IC proposed amount.		

[REDACTED] the interconnection customer (IC), requests to interconnect its Hourglass Wind Energy Centre Project (2024 CEAP IR # 27) to the BC Hydro (BCH) system. Hourglass Wind Energy Centre Project has thirty-four (34) [REDACTED] Type 4 wind turbine generators with total installed capacity of 210.8 MW and a maximum power injection of 200 MW into the BC Hydro system at the POI. The proposed Point of Interconnection (POI) is on BC Hydro's Tumbler Ridge (TLR) 230 kV substation. The IC's project will connect to the POI via a 35 km 230 kV interconnection line. The IC's proposed commercial operation date (COD) is Oct 1, 2030.

Figure 1-1 shows the Peace region 138/230 kV transmission system diagram including P27 interconnection. The study area – south Peace region 230/138 kV network has six existing IPPs, several transmission voltage customers, and BC Hydro distribution substations. The 230kV transmission lines 2L337, 2L313, 2L309, and 2L308 deliver surplus power from QTY, P27, MLW, MKL, and DKW to GMS. The surplus power is also delivered to the Peace 230/138kV area loads via 2L312. 1L377 is normally open between ET3 and PLD, which separates the north Peace 138 kV regional network from the south Peace 230/138kV regional network.

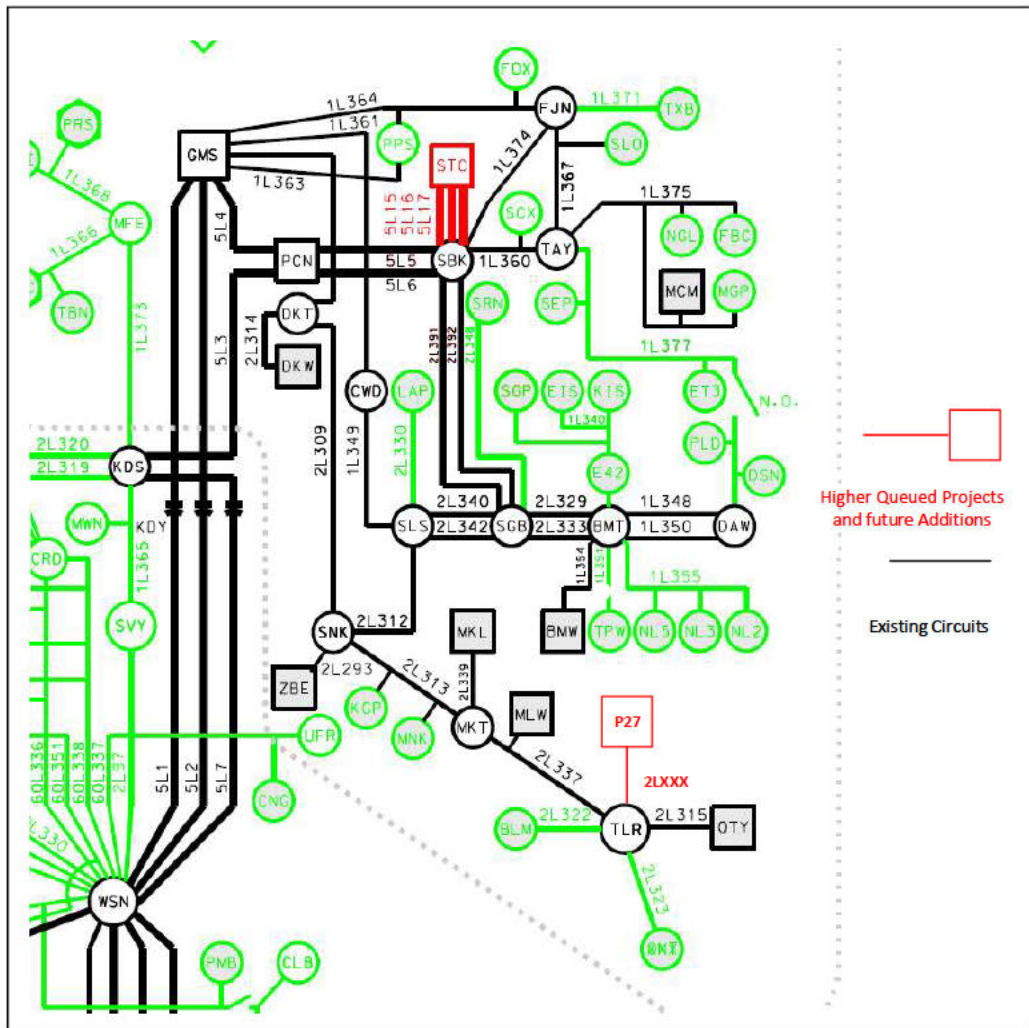


Figure 1-1: Peace Region 138/230 kV Transmission System Diagram

The existing wind farms are as follows:

- Moose Lake Wind Farm (MLW) has a total capacity of 15 MW and is tap connected on 2L337
- Zonnebeke Wind Farm (ZBE) has a total capacity of 30 MW and is connected to SNK via 2L393.
- Meikle Wind Farm (MKL) has a total capacity of 184.6 MW and is connected to MKT via 2L339.
- Quality Wind Farm (QTY) has a total capacity of 142.2 MW and is connected to TLR via 2L315.



- Dokie Wind Farm (DKW) has a total capacity of 144 MW and is connected to DKT via 2L314.
- Bear Mountain Wind Farm (BMW) has a total capacity of 105.4 MW and is connected to BMT via 1L354.

There are major network upgrades being planned in the Peace region as follows.

- Site C generating project will add six hydroelectric generators with a total installed capacity of 1200 MW. Two parallel 500 kV lines (5L5 and 5L6) to Peace Canyon substation (PCN) came to service in 2023. Based on the current schedule, the Site C project will be completed by end of 2025.
- A new 230 kV/138 kV transformer at BMT (i.e. BMT T4) is planned to be installed in June 2026 to accommodate load addition.



2 Purpose and Scopes of Study

This Feasibility Study is a preliminary evaluation of the system impact of interconnecting the proposed project to the BC Hydro system based on power flow and short circuit analysis in accordance with BCH's Open Access Transmission Tariff (OATT). A non-binding good faith estimated cost of required Network Upgrades and estimated time to construct will be provided.

Per OATT, the feasibility study is performed individually for each of the participating projects in the CEAP process and focuses specifically on the BC Hydro regional transmission system where the proposed generating project is proposed to be constructed. An assessment of the incremental effect on the 500kV bulk transmission system is beyond this study scope.

This is a "limited scope" study which is restricted to power flow studies of P0, P1 and P2 planning events as defined in TPL-001-4 and short circuit analysis. The study does not address other technical aspects such as transient stability and switching transients and impact of multiple contingencies. These subjects would be addressed in subsequent System Impact Study if the project is a Successful Participant of the CEAP.

In case impact to the adjacent external systems to BC Hydro is observed, such impact would be addressed in subsequent detailed and coordinated studies with the relevant adjacent entities if the proposed interconnection proceeds further.



3 Standard and Criteria

The Feasibility Study is performed in compliance with the North American Electric Reliability Corporation (NERC) and Western Electricity Coordinating Council (WECC) reliability standards, and the BCH interconnection requirements in the TIR, and upon the ratings of the existing BCH transmission facilities described in Operating Orders, specifically:

- NERC standards: TPL-001-4 and FAC-002-3 relevant to the scope of this Feasibility Study.
- WECC criteria TPL-001-WECC-CRT-4 Transmission System Planning Performance, July 1, 2023.
- BC Hydro's 60 kV to 500 kV Technical Interconnection Requirements for Power Generators.
- BC Hydro Operating Order 5T-10, Ratings for All Transmission Circuits 60 kV or Higher, April 16, 2024.
- BC Hydro Operating Order 5T-14, Ratings for All Transmission and Distribution Transformer, November 8, 2022.
- BC Hydro System Operating Order 7T-22 System Voltage Control, September 19, 2023.



4 Assumptions and Conditions

This Feasibility Study is performed based on the IC's submitted data and information available to BC Hydro on May 22, 2024 for the study purpose. Appendix A shows the plant single line diagram for the IC's project used in the study model. Certain assumptions were, as set out below, made to the extent required.

The power flow study cases used in this Feasibility Study are established based upon the BC Hydro's base resource plan and load forecasts available at the time of performing the study, which includes existing and future generations, transmission facilities, and loads in addition to the subject interconnection project in this study. Applicable seasonal conditions and the appropriate study years for the study planning horizon are also incorporated.

Additional assumptions are listed as follows.

- 1) The regional generation are dispatched to the patterns that stress the transmission system in the study area. In these patterns, the regional generations are typically set to their Maximum Power Outputs (MPO) unless otherwise specified.
- 2) Based on the latest information at the time of this study, the projected in-service date for BMT T4 project is June 2026, which is before the projected in-service date of this IC.
- 3) Based on the schedule available at the time of this study, the Site C project will be completed by end of 2025.
- 4) 1L377 is normally open between ET3 and PLD. Change of this configuration could affect the study results.



5 System Studies and Results

5.1 Power Flow Study Results

Power flow studies were performed to evaluate whether the IC's generating project would cause any unacceptable system performance (e.g. equipment overloads, steady-state voltage violation and voltage instability) and to determine the reinforcement requirement based on steady state performance analysis.

The study focuses on the 2031 light summer (31LS) system load condition which is typically a stressed condition for a generation interconnection project, taking into considerations of factors such as load conditions, seasons and generation patterns. The 2031 heavy summer (31HS) and 2030 heavy winter (30HW) cases are also checked at a high level to capture any possibility of performance violations under high load conditions.

5.1.1 Branch Loading Analysis

Table 5-1 shows a summary of branch loading analysis under system normal and single contingencies (P1, P2) for light summer load conditions.

Branch overload is identified under system normal (P0) and light summer conditions (31LS). 2L313 SNK-KGP Tap, KGP Tap – MNK Tap, or MNK Tap – MKT sections is overloaded by 116%, 116%, or 117% of its continuous ratings respectively. Thermal upgrades of the line for these three sections are required and the proposed new ratings are given below.

Circuit	Circuit Section Terminals		Limiting Section Type	Existing rating		New minimum rating requirement	
	A	B		Summer normal (30° C)		Summer normal (30° C)	
				A	MVA	A	MVA
2L313	SNK	KGP Tap	Overhead	1082	431	1320	526
2L313	KGP Tap	MNK Tap	Overhead	1082	431	1320	526
2L313	MNK Tap	MKT	Overhead	1073	427	1320	526

The connection of the Hourglass Wind Energy Centre project will exacerbate the existing overloads on 2L308 or 2L312, and cause new overloads on 2L309, GMS T13 or GMS T14 under single contingencies (2L308, 2L309, 2L312, SGB 2CB6,



SGB 2CB7, SLS 2CB11/12, SLS 2CB14, DKT 2CB2, DKT 2CB3, DKT 2CB4, SNK 2CB1, or SNK 2CB12). The existing Peace Region Local Gen-shedding RAS¹ will continue to be relied upon to mitigate these overloads and Hourglass Wind Energy Centre will participate in the RAS (shedding at feeder level). In addition, new contingencies, SGB 2CB6, SGB 2CB7, or SLS 2CB14 shall be added in Peace Region Local Gen-shedding RAS. The exact requirements will be determined in subsequent studies if the project proceeds.

¹ The Peace regional transmission system is developed with generation shedding capability to mitigate the impact of various contingencies. Loss of certain transmission element(s) under certain generation, loading and network conditions, will trigger the selected generations to be shed to prevent performance violations.



Table 5-1: Summary of Branch Loading Analysis Results

Case	IC's Plant Output	Contingency		Branch/Equipment loading (MVA)						
				2L313		2L312	2L308	2L309	T13	T14
		Cat.	Description	SNK-MNK	MNK-MKT	SNK-SLS	GMS-DKT	DKT-SNK	GMS	GMS
Summer Rating (MVA)				431	427.5	424.7	427.5	427.5	300	300
31LS	MAX	P0	System Normal	116%	117%					
		P1	2L308	116%	118%	157%				
		P1	2L309	116%	117%	124%				
		P1	2L312	119%	120%		159%	127%	111%	111%
		P2	SGB 2CB6	117%	118%		131%			
		P2	SGB 2CB7	117%	118%		131%			
		P2	SLS 2CB11/2CB12	119%	120%		159%	127%	111%	111%
		P2	SLS 2CB14	117%	118%		131%			
		P2	SNK 2CB1	116%	117%	118%				
		P2	SNK 2CB12	119%	120%		152%	120%	106%	106%
		P2	DKT 2CB2	116%	117%	124%				
		P2	DKT 2CB3	116%	117%	124%				
		P2	DKT 2CB4	116%	117%	124%				
Notes: SGB 2CB6, SGB 2CB7 or SLS 2CB 14 breaker contingencies shall be added in Peace Region Gen-shedding RAS to mitigate the identified overload issue. For other identified overload issues, the existing Peace Region Gen-shedding RAS will be relied upon to mitigate these issues.										

5.1.2 Steady-State Voltage Analysis

With the connection of the IC's project, the voltage performance under system normal condition and single contingencies is acceptable for all the three load conditions (31LS, 31HS, 30HW). Table 5-2 shows a summary of steady-state voltage performance under light summer system condition and contingencies.

Table 5-2: Summary of Steady-State Voltage Study Results

Case	IC's Plant Output	Contingency		Bus Voltages (pu)					
				DKT 230	GMS 230	MKT 230	P27_HV	SNK 230	TLR 230
31LS	Max	P0	System Normal	1.021	1.010	1.044	1.059	1.032	1.052



Case	IC's Plant Output	Contingency		Bus Voltages (pu)					
		Cat.	Description	DKT 230	GMS 230	MKT 230	P27_HV	SNK 230	TLR 230
		P1	GMS_T14&12	1.021	1.010	1.044	1.059	1.031	1.052
		P1	GMS_T13&11	1.021	1.010	1.044	1.059	1.031	1.052
		P1	2L391	1.020	1.009	1.044	1.059	1.032	1.052
		P1	2L392	1.020	1.009	1.044	1.059	1.032	1.052
		P1	SBK_T21	1.021	1.010	1.044	1.059	1.032	1.052
		P1	SBK_T22	1.021	1.010	1.044	1.059	1.032	1.052
		P1	SBK_T11	1.021	1.010	1.044	1.059	1.032	1.052
		P1	SBK_T12	1.021	1.010	1.044	1.059	1.032	1.052
		P1	SBK_Reactor	1.021	1.010	1.044	1.059	1.032	1.052
		P1	2L308	1.021	1.008	1.044	1.059	1.021	1.052
		P1	2L309	1.021	1.013	1.044	1.059	1.029	1.052
		P1	2L314	1.017	1.012	1.044	1.059	1.032	1.052
		P1	2L393	1.021	1.010	1.044	1.059	1.030	1.052
		P1	2L313	1.026	1.022	0.000	0.000	1.040	0.000
		P1	2L329	1.018	1.008	1.044	1.059	1.026	1.052
		P1	2L333	1.018	1.008	1.044	1.059	1.026	1.052
		P1	2L339	1.021	1.013	1.044	1.059	1.037	1.052
		P1	2L337	1.022	1.017	1.044	0.000	1.039	0.000
		P1	2L322	1.021	1.010	1.044	1.059	1.032	1.052
		P1	2L315	1.021	1.013	1.044	1.058	1.036	1.051
		P1	2L330	1.021	1.010	1.044	1.059	1.032	1.052
		P1	2L312	0.973	0.975	1.040	1.059	1.000	1.052
		P1	2L340	1.020	1.009	1.044	1.059	1.031	1.052
		P1	2L342	1.020	1.009	1.044	1.059	1.031	1.052
		P1	2L348	1.021	1.009	1.044	1.059	1.033	1.052
		P2	SGB 2CB3	1.017	1.007	1.044	1.059	1.025	1.052
		P2	SGB 2CB4	1.017	1.007	1.044	1.059	1.025	1.052
		P2	SGB 2CB5	1.017	1.007	1.044	1.059	1.025	1.052
		P2	SGB 2CB6	0.994	0.988	1.044	1.059	1.018	1.052
		P2	SGB 2CB7	0.995	0.989	1.044	1.059	1.018	1.052
		P2	SGB 2CB9	1.017	1.007	1.044	1.059	1.026	1.052
		P2	SGB 2CB12	1.020	1.008	1.044	1.059	1.032	1.052
		P2	SLS 2CB11	0.973	0.975	1.040	1.059	1.000	1.052
		P2	SLS 2CB12	0.973	0.975	1.040	1.059	1.000	1.052
		P2	SLS 2CB13	1.020	1.009	1.044	1.059	1.031	1.052
		P2	SLS 2CB14	0.995	0.989	1.044	1.059	1.018	1.052



Case	IC's Plant Output	Contingency		Bus Voltages (pu)					
		Cat.	Description	DKT 230	GMS 230	MKT 230	P27_HV	SNK 230	TLR 230
		P2	SLS 2CB21	1.019	1.009	1.044	1.059	1.030	1.052
		P1	1L354	1.021	1.012	1.044	1.059	1.037	1.052
		P2	SNK 2CB1	1.021	1.013	1.044	1.059	1.028	1.052
		P2	SNK 2CB21	1.021	1.019	0.000	0.000	1.031	0.000
		P2	SNK 2CB12	0.978	0.979	1.040	1.059	1.000	1.052
		P2	DKT 2CB2	0.000	1.012	1.044	1.059	1.029	1.052
		P2	DKT 2CB3	1.013	1.012	1.044	1.059	1.029	1.052
		P2	DKT 2CB4	1.033	1.012	1.044	1.059	1.031	1.052

5.1.3 Reactive Power Capability Evaluation

The BC Hydro TIR requires IBR power plant to have the dynamic reactive power capability at a minimum of +/- 33% of its MPO at the high voltage side of the IC's switchyard over the full MW operating range.

Based on the PSS/E power flow data submitted by the IC and the power flow study, the proposed generating project would be capable of meeting the BC Hydro's reactive capability requirement at the plant's maximum MW output, which is subject to further verification in the next stage of interconnection study.

Furthermore, the BCH TIR requires the IC's project to provide sufficient reactive power capability over full MW operating range including at zero MW output level. According to the IC-provided reactive capability curve, the proposed WTG has +3.4/-2.933 Mvar reactive capability at zero MW output, which needs to be re-confirmed adequate in subsequent detailed studies if the IC's project proceeds further.

5.1.4 Anti-Islanding Requirements

The IC's project may be inadvertently islanded with other generators and BC Hydro loads after following outages, resulting in potential over-voltages and possible equipment damage which is not allowed.

- Loss of 2L313
- Loss of 2L337
- Loss of 2L308 or 2L309 with 2L312 OOS



- Loss of GMS T13 with GMS T14 & 2L312 OOS
- Loss of GMS T14 with GMS T13 & 2L312 OOS
- Loss of 2L312 with 2L308 or 2L309 OOS, or GMS T13 & T14 OOS

The IC's project is required to participate in the existing Peace region anti-islanding direct transfer trip (DTT) scheme.

In addition, as a back up the IC is required to install anti-islanding protection within its facility to disconnect the IC's wind farm when an inadvertent island with the local load forms.

5.2 Fault Analysis

The short circuit analysis in the FeS is based upon the latest BC Hydro system model, which includes the generating facility information and associated impedance data provided by the IC. A more detailed study will be performed at the system impact study stage if needed.

5.3 Stations Requirements

The POI of Hourglass Wind Energy Centre will be 230kV switchyard of the existing substation Tumbler Ridge (TLR). Following is the scope of station work:

At TLR:

- Expand the substation and extend the existing 230 kV bus structure.
- Add one 230kV line position with the associated substation equipment. Refer to the attached one-line diagram for details.
- Expand the existing control building, if required, to accommodate the new P&C panels and other equipment.
- Terminate the Hourglass Wind Energy Centre line.
- Other associated station work.

Refer to the one-line Sketch in Appendix B for details.

At both SNK and MKT:

- Upgrade 2L313 line drops at SNK and MKT to summer rating of 1500 A (30°C).



5.4 Transmission Line Requirements

Thermally upgrade the overhead circuit 2L313 (SNK to KGP Tap, KGP Tap to MNK Tap, MNK Tap to MKT) from existing 1082 Amps to required 1320 Amps (30°C ambient summer Temperature) by changing from the existing SP 927.2 ASC to new ASC Columbine (at 90°C conductor temperature, 30°C ambient summer Temperature) with structure replacements required.

5.5 Protection & Control Requirements

BC Hydro will provide line protections (BC Hydro end only) for 2LXXX 230 kV transmission line that will integrate Hourglass Wind Energy to BC Hydro system at Tumbler Substation (TLR). As part of the new line protection, telecommunication facilities will be required between TLR and Hourglass Wind (P27).

The IC is to provide the following for the interconnection of Hourglass Wind Energy Centre project.

- Entrance protection that complies with the latest version of the “60 kV to 500 kV BC Hydro Technical Interconnection Requirements for Power Generators.”
- Provide two SEL-411L-1 relays (firmware and options specified by BC Hydro) at the entrance of Hourglass Wind Energy (P27) to provide protection coverage for 2LXXX. BC Hydro P&C Planning will provide core protection settings for these relays to protect transmission line 2LXXX from TLR to the IC during a transmission line fault. Non-core protection such as local breaker failure, auto-reclosing, backup protection for station elements will not be provided by BC Hydro P&C Planning.
- The IC is responsible for NERC PRC-related tasks, settings to compliance standards within their facilities.
- The IC is responsible for providing a communications link for remote interrogation of the PPIS equipment by BCH servers.
- Provide anti-islanding protection as stated in Section 5.1.

The RAS requirements stated in Section 5.1 are mainly to address the overloading concerns under contingencies, which are preliminary. These RAS requirements may utilize the communication channels required for protection purposes included



in the cost estimate. If the proposed project proceeds through the CEAP process, subsequent System Impact Studies may identify additional RAS requirements for this interconnection. These RAS functional requirements will include initiating events, control actions, and latency times. Depending on these supplementary requirements, additional telecommunication facilities may be needed to facilitate signal transmission between the BC Hydro substations and customer facilities.

5.6 Telecommunications Requirements

BC Hydro performed a high-level feasibility assessment of a telecom solution to meet the following requirements.

Teleprotection Requirements for Telecom

- WECC Level 3 64 kbps synchronous circuits PY & SY, TLR – P27, with C37.94 interfaces.

Telecontrol Requirements for Telecom

- Provide P27 SCADA circuit off FVO & SIO.

Other Requirements for Telecom

- Provide PY & SY T1s between TLR and P27.

Certain assumptions were made for determining a potential telecom solution. Details of the telecom solution (e.g. assumptions made, alternatives investigated and work required for BCH and the IC) would be provided at the next study stage.



6 Cost Estimate and Schedule

The non-binding good faith estimated cost and time to construct the Network Upgrades required to interconnect the proposed project will be provided in a separate letter to the IC.



7 Conclusions

To interconnect the Hourglass Wind Energy Centre Project and its facilities to the BCH Transmission System at the POI, this Feasibility Study has identified the following conclusions and requirements:

1. A new 230 kV line position at TLR is required to interconnect the IC's generating project to the BC Hydro system.
2. The connection of Hourglass Wind Energy Centre Project will cause 2L313 thermal overload under system normal conditions. Thermal upgrade of the line for these three sections are required. The required minimum ratings are as follows.

Circuit	Circuit Section Terminals		Limiting Section Type	Existing rating		New minimum rating requirement	
	A	B		Summer normal (30° C)		Summer normal (30° C)	
				A	MVA	A	MVA
2L313	SNK	KGP Tap	Overhead	1082	431	1320	526
2L313	KGP Tap	MNK Tap	Overhead	1082	431	1320	526
2L313	MNK Tap	MKT	Overhead	1073	427	1320	526

3. The connection of the Hourglass Wind Energy Centre project will exacerbate the existing overloads on 2L308 or 2L312, and cause new overloads on 2L309, GMS T13 or GMS T14 under single contingencies (2L308, 2L309, 2L312, SGB 2CB6, SGB 2CB7, SLS 2CB11, SLS 2CB12, SLS 2CB14, DKT 2CB2, DKT 2CB3, DKT 2CB4, SNK 2CB1, or SNK 2CB12). The existing Peace Region Local Gen-shedding RAS will continue to be relied upon to mitigate these overloads and Hourglass Wind Energy Centre will need to participate in the RAS. In addition, new contingencies, SGB 2CB6, SGB 2CB7, SLS 2CB14 shall be added in Peace Region Local Gen-shedding RAS. The exact requirements will be determined in subsequent studies if the project proceeds.
4. Hourglass Wind Energy Centre Project may be islanded with other generations and BC Hydro loads in the area after certain contingencies which may result in over-voltages. The IC's project is required to participate in the existing peace region anti-islanding direct transfer trip (DTT) scheme.



A list of contingencies is provided in Section [REDACTED] [REDACTED]. In addition, as a back up the IC is required to install anti-islanding protection within their facility to disconnect the IC's wind farm when an inadvertent island with the local loads forms.

5. Transmission line requirement

Thermally upgrade the overhead circuit 2L313 (SNK to KGP Tap, KGP Tap to MNK Tap, MNK Tap to MKT) from existing 1082 Amps to required 1320 Amps (30°C ambient summer Temperature) by changing from the existing SP 927.2 ASC to new ASC Columbine (at 90°C conductor temperature, 30°C ambient summer Temperature) with structure replacements required.

6. BC Hydro will provide line protection for 2LXXX protection (BC Hydro end only). As part of the new line protection, telecommunication facilities will be required to accommodate the new protection schemes. The IC shall provide required relays, telecom facility and associated equipment at its facilities to accommodate the new protection schemes.

Appendix A

Plant Single Line Diagram Used for Power Flow Study

Figure A-1 shows Hourglass Wind Energy Centre Project single line diagram used for power flow study.

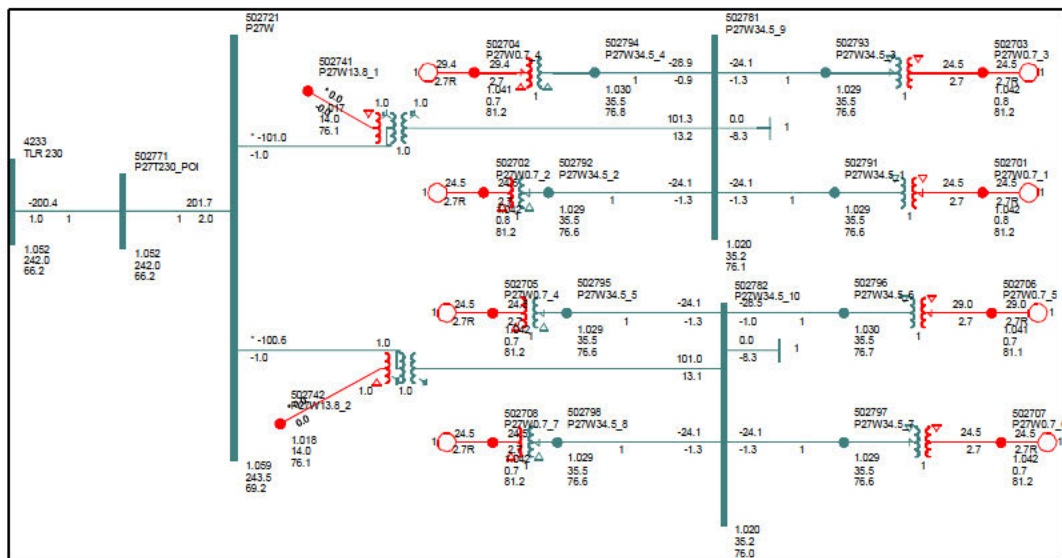


Figure A-1: Hourglass Wind Energy Centre Project Single Line Diagram for Power Flow Study.

As seen in the diagram, Hourglass Wind Energy Centre Project has two main power transformers dividing the plant into two parts. Each part has four (4) feeders connecting 17 wind turbines to the collector station and an 8 Mvar switchable shunt capacitor.

Appendix B

One-Line Sketch of Upgrades at TLR Substation

Figure B-1 shows the required upgrades at the existing substation Tumbler Ridge (TLR)

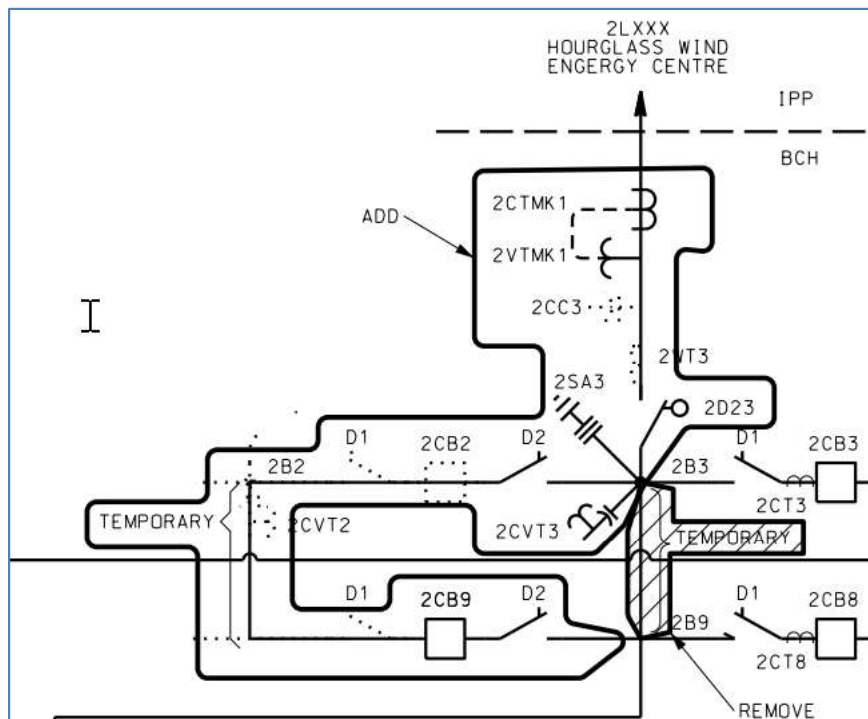


Figure B-1: One-Line Sketch of Upgrades at TLR Substation