

6911 Southpoint Drive (B03)  
Burnaby, BC  
V3N 4X8

November 24, 2025

[REDACTED]  
[REDACTED]  
[REDACTED]  
via email: [REDACTED]

**RE: CEAP IR #90 – [REDACTED] – Interconnection Feasibility Study**

Dear [REDACTED]

Enclosed is the Interconnection Feasibility Study for the proposed Interconnection Request (IR), [REDACTED], submitted under Attachment M-2: Transmission Service and Interconnection Service Procedures for Competitive Electricity Acquisition Process (CEAP) of the Open Access Transmission Tariff (OATT). This letter provides a non-binding good faith estimate of the cost and time to construct the facilities required to interconnect your project to BC Hydro's Transmission System, being the Network Upgrades, based on the findings of the Interconnection Feasibility Study.

### **Open Access Transmission Tariff**

The OATT defines Network Upgrades as additions, modifications, and upgrades to BC Hydro's Transmission System required at or beyond the Point of Interconnection to accommodate the interconnection of the Generating Facility to the BC Hydro's Transmission System. Pursuant to the OATT, BC Hydro will design, procure, construct, install, and own the Network Upgrades. While BC Hydro will pay the costs for the Network Upgrades, the Interconnection Customer provides security for such costs.

### **Interconnection Study Costs**

The Interconnection Customer is responsible for paying the full cost of all Interconnection Studies in cash. Interconnection Study costs vary depending on the scope, complexity, and other factors such as whether any scope is shared with another Interconnection Customer (not applicable to this Interconnection Feasibility Study). The deposit amounts specified in the OATT are not proxy Interconnection Study costs. If actual Interconnection Study costs exceed the deposit amount, the Interconnection Customer must pay the remaining balance in cash. Please refer to the answer for question no. 53 in the posted [Questions & Answers for 2025 Call for Power](#) for typical study cost ranges.

### **Cost Estimate**

Based on the Interconnection Feasibility Study, the non-binding good faith estimated cost (typical accuracy range of +150%/-50%) for Network Upgrades required to interconnect your project is \$281.3 M.

### **Major Scope of Work Identified:**

- Add one 230 kV line position and a line terminal to terminate the customer's line with one 230kV circuit breaker along with associated disconnects, motorised disconnect switches, Surge Arrester, one 230kV Capacitor Voltage Transformer, and associated substation equipment at BC Hydro Tumbler Ridge substation (TLR)
- Relocate the existing line terminal 2L323 along with associated to the north side of TLR

- Remove the temporary connection between bus 2B3 and 2B9 at TLR
- Thermal upgrades on three 2L313 line sections from Sukunka Switching station (SNK) to Meikle Wind Terminal station (MKT) to achieve a summer normal rating of 1293 Amps
- Upgrade required substation facilities, infrastructures, and bus work to support new station equipment
- Supply and install required Protection, Control and Telecommunications equipment

**Exclusions:**

- GST
- Permits
- Right-of-Way & property costs

**Key Assumptions:**

- Construction by contractor
- 24 months of construction is considered
- No construction during winter season
- Execution of early Engineering and Procurement Agreement
- A certificate of public convenience and necessity (CPCN) requirement will be exempt
- No expansion of existing stations or control buildings to accommodate new equipment
- Impact Benefit Agreements with First Nations are not considered
- New line in parallel to the existing line was assumed for line upgrade

**Key Risks:**

- Expansion of the existing substation and/or control building may be required leading to increased costs and/or a longer project schedule
- Major equipment delivery presents potential project cost and schedule risks, based on variance in equipment lead times
- Transmission scope and routing may be different than assumed, including number of structures and types
- If a CPCN is required for the project, it may impact project cost and schedule risks
- No defined supply chain strategy; construction costs may increase depending on delivery method
- Project schedule may be longer than expected, leading to increased overhead costs
- Ground improvements may be required leading to increased construction costs
- Contaminated soil may be encountered leading to increased construction costs
- Cost of materials and major equipment may be affected by market conditions and escalation

**Study Limitations and Exclusions*****Protection, Control, and Telecommunications***

The Interconnection Feasibility Study does not include a detailed review of the protection, control, and telecommunications system requirements specific to your Interconnection Request. Based on a high-level review, we have identified proxy costs for protection, control, and telecom Network Upgrades drawn from comparable interconnection projects with similar scope and complexity; these proxy costs have been included solely for indicative budgeting purposes. The relative interconnection cost determined by the Interconnection Feasibility Study includes a telecommunications component based on an assumed solution

to deliver teleprotection and telecontrol circuit requirements necessary for the Interconnection Request. Protection, control, and telecommunications system requirements will be reviewed in detail in the System Impact Study if you are a successful participant of the CEAP and meet applicable requirements.

For Interconnection Feasibility Study purposes, it is assumed that any applicant-proposed works that could obstruct or impair the performance of existing BC Hydro microwave systems or new links from the proposed Interconnection Customer Interconnection Facilities (ICIF) to the BC Hydro microwave system would be identified and either relocated or repositioned as determined in a System Impact Study if you are a successful participant of the CEAP and meet applicable requirements. Such works may include, but are not limited to, towers, turbines, dams, support structures, panels, surface materials deposited or redistributed, water surface changes, or vegetation.

### ***Generation Shedding/Curtailment Scheme and Electromagnetic Transient (EMT) Studies***

The generation shedding/curtailment scheme reviews (e.g., Remedial Action Scheme (RAS), and a direct transfer trip for anti-islanding scheme) and EMT studies are completed in a System Impact Study. The outcomes of these studies may result in additional requirements, which could include Network Upgrades or ICIF. Any costs associated with completion of these studies, and resulting requirements, are not included in the Interconnection Feasibility Study cost estimate.

### ***Revenue Metering***

Please note that revenue metering requirements have not been determined with the Interconnection Feasibility Study. As such, any costs associated with revenue metering and other interconnection components are not included in the cost estimate provided above. Once these requirements are defined, costs that are attributable to the Interconnection Customer are to be paid in cash. For more details on revenue metering requirements and responsibilities, please refer to:

<https://www.bchydro.com/content/dam/BCHydro/customer-portal/documents/distribution/standards/ds-rmr-complex-revenue-metering.pdf>.

### **Schedule**

Based on the Interconnection Feasibility Study, the non-binding good faith estimated in-service date for your Interconnection Request's Network Upgrades is Quarter 3 2033 (calendar year). To achieve this timeline, we may need to expedite certain activities, including engineering design and procurement of long-lead equipment.

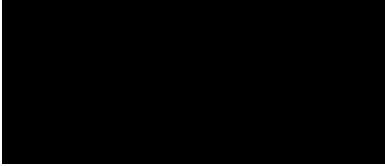
Timely actions required from you to minimize risks to the schedule:

- Submission of additional technical data required for the System Impact Study and Facilities Study
- Submission of any required information or document such as demonstration of Site Control
- Execution of Combined Study Agreement and Standard Generator Interconnection Agreement
- Financial commitments and securities

Please note that changes to your Interconnection Request or delays in data submission or financial commitments may also impact the target in-service date.

If you have any questions, please contact the BC Hydro CEAP team at [ceap2025@bchydro.com](mailto:ceap2025@bchydro.com).

Sincerely,



Manager, Customer Interconnections

BC Hydro

Encl.: CEAP\_2025\_IR90\_ [redacted] \_Feasibility\_Study.pdf

[Redacted]

# Interconnection Feasibility Study

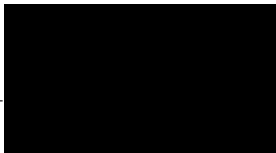
**BC Hydro EGBC Permit to Practice No: 1002449**

**2025 CEAP IR # 90**

Prepared for:

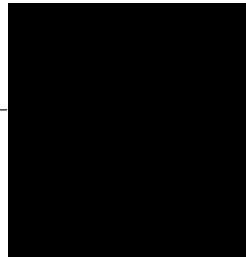


Prepared by:

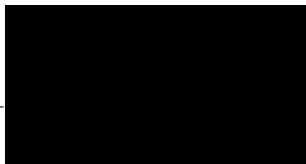


\_\_\_\_\_

Specialist Engineer, Transmission  
Operations Services



Reviewed by:



\_\_\_\_\_

Princ ssion  
Operations Services

Accepted by:



\_\_\_\_\_

Manager, Transmission Planning

## Report Metadata

Header: 2025 CEAP IR # 90  
Subheader: Interconnection Feasibility Study  
Title: [REDACTED]  
Subtitle: 2025 CEAP IR # 90  
Report Number: 1000-APR-00065  
Revision: 0  
Confidentiality: Public  
Date: 2025 Nov 21  
Volume: 1 of 1

Prepared for: [REDACTED]  
Prepared by: [REDACTED]  
Title: Specialist Engineer, Transmission Operations Services  
Checked by: [REDACTED]  
Title: Specialist Engineer, Transmission Operations Services  
Reviewed by: [REDACTED]  
Title: Principal Engineer, Transmission Operations Services

Related Facilities: TLR (Tumbler Ridge 230 kV substation)  
Additional Metadata: Transmission Planning 2025-110  
Filing Subcode 1350

## Revisions

Revision	Date	Description
0	2025 Nov	Initial release

## Disclaimer of Warranty, Limitation of Liability

This report was prepared solely for internal purposes. All parties other than BC Hydro are third parties.

BC Hydro does not represent, guarantee or warrant to any third party, either expressly or by implication:

any information, product or process disclosed, described or recommended in this report.

BC Hydro does not accept any liability of any kind arising in any way out of the use by a third party of any information, product or process disclosed, described or recommended in this report, nor does BC Hydro accept any liability arising out of reliance by a third party upon any information, statements or recommendations contained in this report. Should third parties use or rely on any information, product or process disclosed, described or recommended in this report, they do so entirely at their own risk.

This report was prepared by the British Columbia Hydro And Power Authority ("BCH") or, as the case may be, on behalf of BCH by persons or entities including, without limitation, persons or entities who are or were employees, agents, consultants, contractors, subcontractors, professional advisers or representatives of, or to, BCH (individually and collectively, "BCH Personnel").

This report is to be read in the context of the methodology, procedures and techniques used, BCH's or BCH's Personnel's assumptions, and the circumstances and constraints under which BCH's mandate to prepare this report was performed. This report is written solely for the purpose expressly stated in this report, and for the sole and exclusive benefit of the person or entity who directly engaged BCH to prepare this report. Accordingly, this report is suitable only for such purpose, and is subject to any changes arising after the date of this report. This report is meant to be read as a whole, and accordingly no section or part of it should be read or relied upon out of context.

Unless otherwise expressly agreed by BCH:

- (a) any assumption, data or information (whether embodied in tangible or electronic form) supplied by, or gathered from, any source (including, without limitation, any consultant, contractor or subcontractor, testing laboratory and equipment suppliers, etc.) upon which BCH's opinion or conclusion as set out in this report is based (individually and collectively, "Information") has not been verified by BCH or BCH's Personnel; BCH makes no representation as to its accuracy or completeness and disclaims all liability with respect to the Information;
- (b) except as expressly set out in this report, all terms, conditions, warranties, representations and statements (whether express, implied, written, oral, collateral, statutory or otherwise) are excluded to the maximum extent permitted by law and, to the extent they cannot be excluded, BCH disclaims all liability in relation to them to the maximum extent permitted by law;
- (c) BCH does not represent or warrant the accuracy, completeness, merchantability, fitness for purpose or usefulness of this report, or any information contained in this report, for use or consideration by any person or entity. In addition, BCH does not accept any liability arising out of reliance by a person or entity on this report, or any information contained in this report, or for any errors or omissions in this report. Any use, reliance or publication by any person or entity of this report or any part of it is at their own risk; and
- (d) In no event will BCH or BCH's Personnel be liable to any recipient of this report for any damage, loss, cost, expense, injury or other liability that arises out of or in connection with this report including, without limitation, any indirect, special, incidental, punitive or consequential loss, liability or damage of any kind.

## Copyright Notice

Copyright and all other intellectual property rights in, and to, this report are the property of, and are expressly reserved to, BCH. Without the prior written approval of BCH, no part of this report may be reproduced, used or distributed in any manner or form whatsoever.

## Contributors

The following accept responsibility for the content in the specified sections. Professionals apply their signature and/or seal as appropriate.

**Section:**

Entire report  
except listed  
below

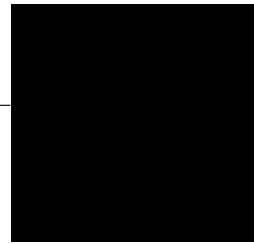
**Discipline:**

Transmission Planning

Contributed by:



Specialist Engineer, Transmission  
Operations Services



**Section:**

5.2, 5.3

Contributed by:

**Discipline:**

Stations Planning



Specialist Engineer, Station Planning



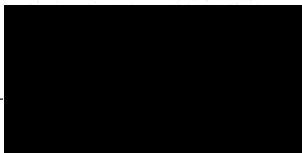
**Section:**

5.4

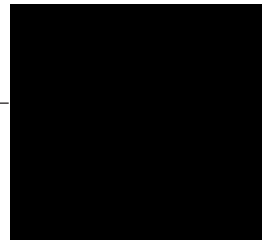
Contributed by:

**Discipline:**

Transmission Lines Engineering



Sr. Engineer, Transmission Lines  
Engineering



## Executive Summary

[REDACTED], the interconnection customer (IC), requests to interconnect its [REDACTED] (2025 CEAP IR # 90) to the BC Hydro system. [REDACTED] has thirty-one (31) [REDACTED] Type 3 wind turbine generators, with a total installed capacity of 206.1 MW. The IC's proposed Point of Interconnection (POI) is on BC Hydro's Tumbler Ridge (TLR) 230 kV substation. The proposed commercial operation date (COD) is 31st December 2030.

To interconnect the [REDACTED] wind project and its facilities to the BCH Transmission System at the proposed POI, this Feasibility Study has made the recommendations and conclusions as follow:

1. The POI on BC Hydro's TLR 230 kV substation proposed by the IC is acceptable to interconnect the customer's generating project to the BCH system.
2. Three 2L313 line sections from SNK to KGP Tap, KGP Tap to MNK Tap, and MNK Tap to MKT shall be thermally upgraded to achieve a summer normal rating of 1293 A or greater at 30°C ambient.
3. Under single contingency (N-1) conditions, connecting the [REDACTED] [REDACTED] wind project is expected to increase thermal overloads on BC Hydro's equipment in the Peace Regional system during certain contingencies. The existing Peace Region Local Gen-shedding RAS will continue to be relied upon to resolve these overloads, and the IC is required to participate in the RAS. In addition, the IC is also required to participate in GMS Area Gen Shed RAS for Peace 500 kV transmission line contingencies. Detailed Peace Region Local Gen Shed RAS and GMS Area Gen Shed RAS functional requirement modifications will be specified later if the IC's project proceeds to next stage of the interconnection process.
4. Relocate the existing line terminal 2L323 at TLR substation along with associated equipment, so that the line egress is from the north side of the substation.

5. Install a new 230 kV outdoor dead-tank circuit breaker, a new line terminal with associated equipment, and complete other related station works as detailed in Section 5.3.
6. [REDACTED] wind project is not arranged for islanded operation. In addition, the IC is required to install anti-islanding protection within its facility to disconnect the IC's wind farm from the grid when an inadvertent island with the local loads forms.
7. The [REDACTED] wind project is required to have the dynamic reactive power capability at a minimum of +/- 33% of its MPO at the high voltage side of the IC's switchyard over the full MW operating range, per BC Hydro's TIR Section 6.4.2.
8. The "STATCOM option" for the proposed type-3 WTGs is required so that each turbine can provide reactive power capability at zero MW output. BC Hydro recognizes that Type-3 WTGs with the STATCOM option have an inherent limitation—providing only partial reactive power capability during turbine standstill.
9. Fast Frequency Response (FFR), as per BCH TIR Section 6.4.5, is required at [REDACTED] wind project. The proposed wind turbine generators, when the FFR function is enabled, are expected to temporarily boost the MW output to limit the system frequency drop during a major frequency event. The FFR settings should be determined in coordination with BC Hydro in the later stage of the interconnection process.

The above conclusions are made based on the IC's input data and study assumptions listed in Section 4, which represent the best available information on October 14, 2025.

A non-binding good faith cost for required network upgrades and estimated schedule for construction are included in a separate letter to the IC.

Please note that, this Feasibility Study report does not include the descriptions of Protection, Control, and Telecommunications requirements and the associated upgrade scopes; however, as discussed in Section 2 "Purpose and Scopes of Study, the associated cost implications are captured and delivered in the cover letter to the IC".

# Contents

<b>Executive Summary</b>	<b>vi</b>
<b>1 Introduction</b>	<b>1</b>
<b>2 Purpose and Scopes of Study</b>	<b>4</b>
<b>3 Standard and Criteria</b>	<b>5</b>
<b>4 Assumptions and Conditions</b>	<b>6</b>
<b>5 System Studies and Results</b>	<b>7</b>
5.1 Power Flow Study Results	7
5.1.1 Thermal Overload Analysis	7
5.1.2 Steady-State Voltage Analysis	8
5.1.3 Reactive Power Capability Evaluation	9
5.1.4 Anti-Islanding Requirements	9
5.1.5 Other Performance Requirements	9
5.2 Fault Analysis	9
5.3 Stations Requirements	10
5.4 Transmission Line Requirements	11
<b>6 Cost Estimate and Schedule</b>	<b>12</b>
<b>7 Conclusions</b>	<b>13</b>

## Appendices

Appendix A	Schematic Diagram of the IC's Project
Appendix B	Power Flow Study Results
Appendix C	One-Line Sketch for New Switching Station

## Acronyms

The following are acronyms used in this report.

BCH	BC Hydro
CEAP	Competitive Electricity Acquisition Process
COD	Commercial Operation Date
DTT	Direct Transfer Trip
ERIS	Energy Resource Interconnection Service
FeS	Feasibility Study
IBR	Inverter-Based Resources
IC	Interconnection Customer
IR	Interconnection Request
LAPS	Local Area Protection Schemes
MPO	Maximum Power Output
NERC	North American Electric Reliability Corporation
NRIS	Network Resource Interconnection Service
OATT	Open Access Transmission Tariff
POI	Point of Interconnection
RAS	Remedial Action Scheme
TIR	BC Hydro “60 kV to 500 kV Technical Interconnection Requirements for Power Generators”
WECC	Western Electricity Coordinating Council
WTG	Wind Turbine Generator

# 1 Introduction

Table 1-1 below summarizes the project reviewed in this Feasibility Study.

Table 1-1 Summary of Project Information

Project Name	[REDACTED]	
Name of Interconnection Customer (IC)	[REDACTED]	
Point of Interconnection (POI)	Tumbler Ridge (TLR) 230kV	
IC's Proposed COD	31st December 2030	
Type of Interconnection Service	NRIS <input checked="" type="checkbox"/>	ERIS <input type="checkbox"/>
Maximum Power Injection (MW)	200 MW (Summer)	200 MW (Winter)
Number of Turbines	31 x 7 MW	
Plant Fuel	Wind	

[REDACTED], the interconnection customer (IC), requests to interconnect its [REDACTED] wind project (2025 CEAP IR # 90) to the BC Hydro system. [REDACTED] wind project has thirty-one (31) [REDACTED] Type 3 wind turbine generators, with total installed capacity of 206.1 MW into the BC Hydro system. The IC's proposed Point of Interconnection (POI) is on BC Hydro's Tumbler Ridge (TLR) 230 kV substation. The proposed commercial operation date (COD) is 31st December 2030.

Figure 1-1 shows the Peace region 138/230/500 kV transmission system diagram. The Peace Regional System is connected to BC Hydro 500 kV bulk system through two 500 kV substations GMS and SBK:

- One 230 kV transmission line 2L308 and two 138 kV transmission lines 1L361 and 1L364 connecting GMS substation to Peace Regional system, and
- Two 230 kV transmission lines 2L391 and 2L392 and three 138 kV transmission lines 1L360, 1L370 and 1L374 connecting SBK substation to Peace Regional system.





## 2 Purpose and Scopes of Study

This Feasibility Study is a preliminary evaluation of the system impact of interconnecting the proposed project to the BC Hydro transmission system based on power flow and short circuit analysis in accordance with BCH's Open Access Transmission Tariff (OATT) and produces the estimated cost of required Network Upgrades and the implementation schedule.

Per OATT, the Feasibility Study is performed individually for each of the participating projects in the CEAP process and focuses specifically on the BC Hydro regional transmission system where the proposed generating project is connected and affects.

This is a "limited scope" study which is restricted to power flow studies of P0, P1 and P2 planning events as defined in TPL-001-4 and short circuit analysis. The study does not address other technical aspects such as transient stability and switching transients and impact of multiple contingencies. These subjects will be addressed in subsequent System Impact Study if the project proceeds further. In addition, any potential impacts to the adjacent external systems to BC Hydro would be addressed in subsequent detailed and coordinated studies with the relevant adjacent entities if the proposed generator project proceeds further.

Please note that, due to the compressed study timeline for CEAP 2025 Feasibility Study, this report does not include the descriptions of the Protection, Control, and Telecommunication requirements and the associated upgrade scopes. Instead, the network upgrades associated with Protections, Controls and Telecommunications are incorporated with cost estimates in a separate cover letter to the IC.

### 3 Standard and Criteria

The Feasibility Study is performed in compliance with the North American Electric Reliability Corporation (NERC) and Western Electricity Coordinating Council (WECC) reliability standards, and the BCH interconnection requirements in the TIR, and upon the ratings of the existing BCH transmission facilities described in Operating Orders, specifically:

- NERC standards: TPL-001-4 and FAC-002-3 relevant to the scope of this Feasibility Study.
- WECC criteria TPL-001-WECC-CRT-4 Transmission System Planning Performance, July 1, 2023.
- BC Hydro's 60 kV to 500 kV Technical Interconnection Requirements for Power Generators, Rev 2.1.1, Effective: Sept 22, 2025.
- BC Hydro Operating Order 5T-10, Ratings for All Transmission Circuits 60 kV or Higher, Sept 17, 2025.
- BC Hydro Operating Order 5T-14, Ratings for All Transmission and Distribution Transformer, Sept 22, 2025.
- BC Hydro System Operating Order 7T-22 System Voltage Control, Sept 19, 2023.

## 4 Assumptions and Conditions

This Feasibility Study is performed based on the IC's submitted data and information available to BC Hydro on Oct 14, 2025 for the study purpose. Assumptions are made wherever the IC's input is unavailable. Appendix A shows the schematic diagram of the IC's Project IC's project used in the study model.

The power flow study cases used in this Feasibility Study are established based upon the BC Hydro's base resource plan and load forecasts available at the time of performing the study, which includes existing and future generators, transmission facilities, and loads in addition to the subject interconnection project in this study. Applicable seasonal conditions and the appropriate study years for the study planning horizon are also incorporated. Additional assumptions are listed as follows.

- 1) The generation in the study area are dispatched to the patterns that stress the transmission system in the study area. In these patterns, the associated generators are typically set to their Maximum Power Outputs (MPO) unless otherwise specified.
- 2) There are three wind farm projects in Peace Region system that have been planned in the future:
  - The following are the two wind farm projects that comes from 2024 call for power: [REDACTED] project 200 MW connecting on 2L392 and [REDACTED] Wind project 200 MW connecting on 2L391.
  - [REDACTED] project 54.6 MW connecting to Sukunka (SNK) substation
- 3) BMT T4 300 MVA has planned to be in service by March 2027.
- 4) A new 138 kV transmission line from SBK to TAY - 1L370 has been planned to be in service by March 2029.

## 5 System Studies and Results

### 5.1 Power Flow Study Results

Power flow studies were performed to evaluate whether the IC’s generating project would cause any unacceptable system performance (e.g. equipment overloads, steady-state voltage violation and voltage instability) and to determine the system reinforcement requirement based on steady state performance analysis.

The study focuses on the base scenario — 30HW/31LS/31HS system conditions after the [REDACTED] enters service. These base cases were prepared based on factors such as load conditions, seasonal variation in ambient temperatures, and generation patterns that stress the transmission system.

In addition to the base scenario, an additional scenario is studied for the future year system conditions that include all the higher-queued generating projects in the region (32HW/33LS/33HS).

The studies are performed for system normal conditions and under critical system contingencies specified in the P1 and P2 events by NERC TPL-001-4. Study results are summarized below.

#### 5.1.1 Thermal Overload Analysis

Table 5-1 summarizes the thermal overload concerns identified in the study and the proposed solutions. Appendix B contains the details of thermal overload analysis results.

Table 5-1: Thermal Overload Concerns and Proposed Solutions

Equipment subject to overloads	Conditions observed	Contingencies that result in overloads	Solution Proposed
Under system normal conditions			
2L313 (SNK-MNK, MNK-MKT)	LS, HS	P0: system normal	Thermally upgrade 2L313 line sections from SNK to KGP Tap, KGP Tap to MNK Tap, and MNK Tap to MKT to achieve a continuous rating of 1293 A or greater at 30°C ambient.
Under contingencies			

2L312	LS	P1.2: 2L308, 2L309 P2.3: SNK 2CB1, DKT 2CB2/3/4.	Generation Shedding RAS.
2L308	LS	P1.2: 2L312 P1.2: 2L392 (SBK- TAW) P2.3: SLS 2CB11/12/14/21, SNK 2CB12, SBK 2CB21/22.	
2L309	LS	P1.2: 2L312 P2.3: SLS 2CB11/12/14, SNK 2CB12.	
GMS T13	LS	P1.2: 2L312 P2.2 GMS_T14&12 P2.3: SLS 2CB11/12, SNK 2CB12.	
GMS T14	LS	P1.2: 2L312 P2.2 GMS_T13&11 P2.3: SLS 2CB11/12, SNK 2CB12.	
Note: For P1 and P2 contingencies, only the overloads in 33LS case, which is the worst case, are listed.			

The study shows that the addition of [REDACTED] wind project would cause new thermal overload on 2L313 from SNK to KGP Tap, KGP Tap to MNK Tap, and MNK Tap to MKT under system normal conditions in both light and heavy summer cases. Thermally upgrade 2L313 to achieve a summer normal rating of 1293 A or greater at 30°C ambient is required.

For N-1 contingency conditions, the connection of [REDACTED] wind project will contribute to the pre-existing thermal overload on the BC Hydro lines 2L308 or 2L312 and cause new overloads on 2L309, GMS T13, or GMS T14 under single contingencies or breaker contingencies as listed in Table 5-1. The existing Peace Region Local Gen-shedding RAS will continue to be relied upon to resolve these overloads and [REDACTED] wind project is required to participate in the RAS (shedding at Feeder level).

In addition, the generators at this IC are also required to participate in GMS Area Gen Shed RAS scheme for Peace 500 kV transmission line contingencies.

Detailed Peace Region Local Gen Shed RAS and GMS Area Gen Shed RAS functional requirement modifications will be specified later if the IC's project proceeds to next stage of the interconnection process.

### 5.1.2 Steady-State Voltage Analysis

With the connection of the IC's project, the voltage performance under system normal condition (P0) is acceptable for all the studied load conditions (31ls, 31hs, 30hw).

Voltage deviation violations are identified at buses DKT 230 and SNK 230 in 31HS and 30HW cases and at bus SNK 230 in 30HW cases for 2L312 contingency. Gen-shedding RAS is required to mitigate the issues. Appendix B shows the details in the steady-state voltage study results.

### 5.1.3 Reactive Power Capability Evaluation

The BC Hydro TIR requires IBR power plant to have the dynamic reactive power capability at a minimum of +/- 33% of its MPO at the high voltage side of the IC's switchyard over the full MW operating range.

Based on the power flow model data submitted by the IC, the proposed [REDACTED] [REDACTED] wind project would be capable of meeting the BC Hydro's reactive capability requirement at the plant's maximum MW output, which is subjected to further verification in the next stage of the interconnection process.

In addition, according to the IC-provided reactive capability data, the proposed WTG would provide +1.7 Mvar to -1.7 Mvar reactive capability at the zero MW output if the turbine's "STATCOM" function is enabled. This function needs to be re-confirmed if the IC's project proceeds to next stage of the interconnection process.

### 5.1.4 Anti-Islanding Requirements

[REDACTED] wind project is not arranged for islanded operation. In addition, the IC is required to install anti-islanding protection within its facility to disconnect the IC's wind farm from the grid when an inadvertent island with the local loads forms.

### 5.1.5 Other Performance Requirements

Fast Frequency Response (FFR), as per BCH TIR Section 6.4.5, is required at the [REDACTED] wind project. The proposed wind turbine generators, when the FFR function is enabled, are expected to temporarily boost

the MW output to limit the system frequency drop during a major frequency event. The FFR settings should be determined in coordination with BC Hydro in the later stage of the interconnection process.

## 5.2 Fault Analysis

The short circuit analysis in the Feasibility Study I is based upon the latest BC Hydro system model, which includes the generating facility information and associated impedance data provided by the IC. A more detailed study will be performed at the System Impact Study stage if needed.

## 5.3 Stations Requirements

To interconnect this Interconnection Customer (IC) to BC Hydro's transmission system at the 230 kV bus of the Tumbler Ridge (TLR) Substation, the following station works are required:

- Relocate the existing line terminal 2L323 along with associated equipment - 2CVT4 and 2D24, so that the line egress is from the north side of the substation. With the addition of the seventh circuit breaker (2CB2) as part of this interconnection at the TLR substation, the total number of circuit breakers now exceeds the planning criteria. Therefore, provisions must be made for a future circuit breaker (2CB10) to complete a meshed ring configuration. However, no additional breaker will be installed under this project, apart from the relocation of the 2L323 line terminal and its associated equipment.
- Remove the temporary connection between bus 2B3 and 2B9.
- Install one new outdoor dead-tank type, 230kV circuit breaker (2CB2) rated at 3000A continuous current, 40kA interrupting rating, 950kV BIL along with associated disconnects rated 3000A.
- Install a new 230kV line terminal (2LXXX-XXXXXXXXXX) with associated motorised disconnect switch (2D23) rated 3000A, Surge Arrester (2SA13) and one 230kV Capacitor Voltage Transformer (2CVT3).
- Expand the control building, if required, to accommodate new P&C panels and other equipment.

- Expand the existing 230kV switchyard within the limits of the current property boundaries, to accommodate the above mentioned facilities.
- Other associated station works.
- Refer to the one-line diagram in Appendix C for details.

## 5.4 Transmission Line Requirements

Re-terminating 2L323 to the north side of the TLR substation is needed to accommodate new 230 kV interconnection line termination at TLR.

Thermally upgrade the overhead circuit 2L313 (SNK to KGP Tap, KGP Tap to MNK Tap, MNK Tap to MKT) from existing 1082 Amps to required 1293 Amps (30°C ambient summer Temperature) by changing from the existing SP 927.2 ASC to new ASC Columbine (at 90°C conductor temperature, 30°C ambient summer Temperature) with structure replacements may be required.

In the case of planned outage constrain of 2L313, build a brand new parallel circuit with the new proposed replacement conductor and new right-of-way may be required.

## 6 Cost Estimate and Schedule

The non-binding good faith estimated cost and time to construct the Network Upgrades required to interconnect the proposed project will be provided in a separate letter to the IC.

## 7 Conclusions

To interconnect the [REDACTED] wind project and its facilities to the BCH Transmission System at the POI, this Feasibility Study has identified the following conclusions and requirements:

1. The POI on BC Hydro's TLR 230 kV substation proposed by the IC is acceptable to interconnect the customer's generating project to the BCH system.
2. Three 2L313 line sections from SNK to KGP Tap, KGP Tap to MNK Tap, and MNK Tap to MKT shall be thermally upgraded to achieve a summer normal rating of 1293 A or greater at 30°C ambient.
3. Under single contingency (N-1) conditions, connecting the [REDACTED] [REDACTED] wind project is expected to increase thermal overloads on BC Hydro's equipment in the Peace Regional system during certain contingencies. The existing Peace Region Local Gen-shedding RAS will continue to be relied upon to resolve these overloads, and the IC is required to participate in the RAS. The IC is also required to participate in GMS Area Gen Shed RAS for Peace 500 kV transmission line contingencies. Detailed Peace Region Local Gen Shed RAS and GMS Area Gen Shed RAS functional requirement modifications will be specified later if the IC's project proceeds to next stage of the interconnection process.
4. Relocate the existing line terminal 2L323 at TLR substation along with associated equipment, so that the line egress is from the north side of the substation.
5. Install a new 230 kV outdoor dead-tank circuit breaker, a new line terminal with associated equipment, and complete other related station works as detailed in Section 5.3.
6. [REDACTED] wind project is not arranged for islanded operation. In addition, the IC is required to install anti-islanding protection within its facility to disconnect the IC's wind farm from the grid when an inadvertent island with the local loads forms.

7. The [REDACTED] wind project is required to have the dynamic reactive power capability at a minimum of +/- 33% of its MPO at the high voltage side of the IC's switchyard over the full MW operating range, per BC Hydro's TIR Section 6.4.2.
8. The "STATCOM option" for the proposed type-3 WTGs is required so that each turbine can provide reactive power capability at zero MW output. BC Hydro recognizes that Type-3 WTGs with the STATCOM option have an inherent limitation—providing only partial reactive power capability during turbine standstill.
9. Fast Frequency Response (FFR), as per BCH TIR Section 6.4.5, is required at [REDACTED] wind project. The proposed wind turbine generators, when the FFR function is enabled, are expected to temporarily boost the MW output to limit the system frequency drop during a major frequency event. The FFR settings should be determined in coordination with BC Hydro in the later stage of the interconnection process.



## Appendix A

### Schematic Diagram of the IC's Project

Figure A-1 shows the schematic diagram for the [redacted] wind project.

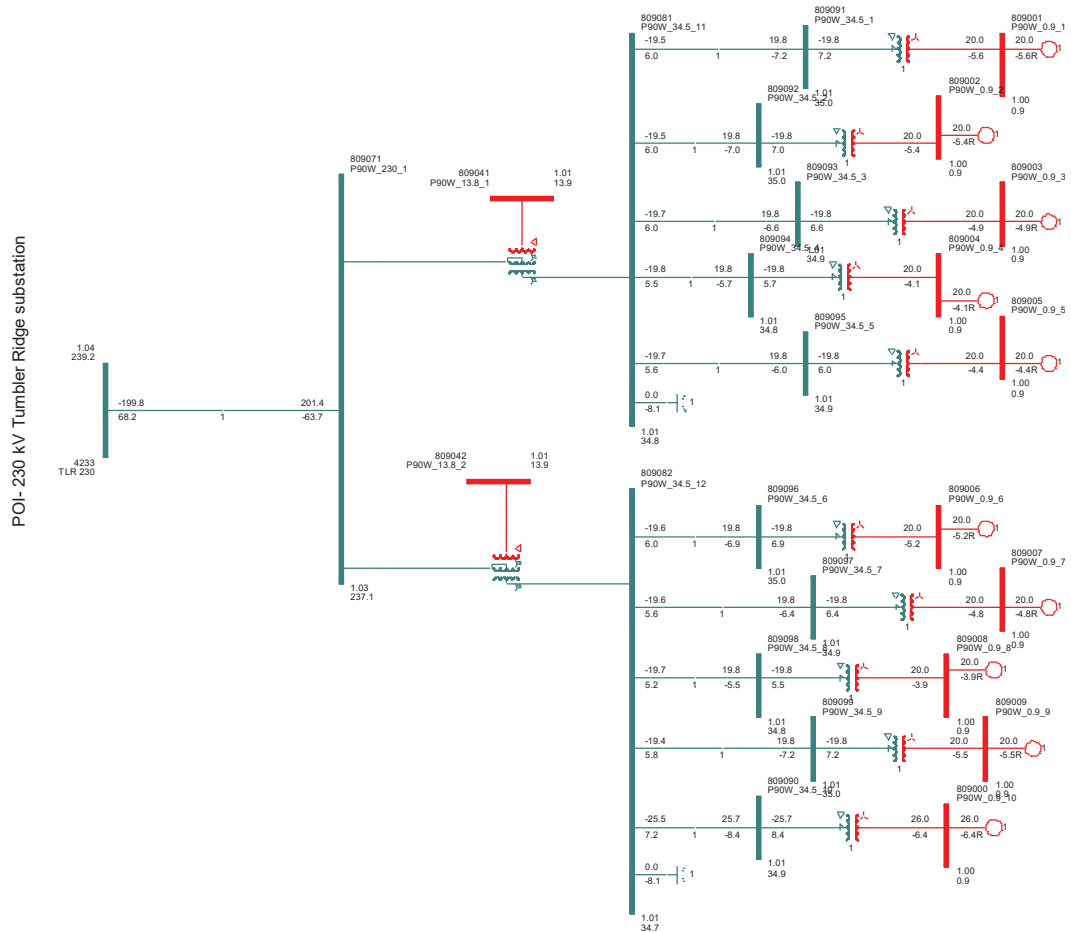


Figure A-1: [redacted] wind project Plant Schematic Diagram.

## Appendix B

### Power Flow Study Results

#### Base Scenario (30HW/31HS/31LS) and Additional Scenario (33LS)

**Table B-1: Thermal Overload Study Results**

Case	Peace Regional Generation	Contingency Identified		Branch/Equipment loading (MVA)						
				2L313		2L312	2L308	2L309	T13	T14
		Category	Description	SNK-MNK	MNK-MKT	SNK-SLS	GMS-DKT	DKT-SNK	GMS	GMS
Summer Rating in MVA				431	427	425	427	427	300	300
33LS	Max	P0	System Normal	116%	119%					
	Max	P1.2	2L308			171%				
	Max	P1.2	2L309			139%				
	Max	P1.2	2L312				169%	136%	121%	120%
	Max	P1.2	2L392 (SBK-████)				107%			
	Max	P2.2	GMS_T13&11							110%
	Max	P2.2	GMS_T14&12						110%	
	Max	P2.3	SLS 2CB11/12				169%	136%	121%	120%
	Max	P2.3	SLS 2CB14				137%	107%		
	Max	P2.3	SLS 2CB21				100%			
	Max	P2.3	SNK 2CB1			118%				
	Max	P2.3	SNK 2CB12				148%	116%	103%	103%
	Max	P2.3	DKT 2CB2/3/4			139%				
	Max	P2.3	SBK 2CB21/22				110%			

Note: Only the overloads in 33LS case, which is the worst case, are listed

**Table B-2: Steady-State Voltage Study Results**

Case	IC's Plant Output	Contingency		Bus Voltages (pu)					
		Cat.	Description	DKT 230	GMS 230	MKT 230	P90 HV	SNK 230	TLR 230
31LS	Max	P0	System Normal	1.016	1.004	1.038	1.043	1.022	1.040
		P1.2	2L312	0.936	0.953	0.983	1.012	0.946	1.001
31HS	Max	P0	System Normal	1.018	1.006	1.038	1.043	1.022	1.040
		P1.2	2L312	0.937	0.954	0.984	1.013	0.947	1.002
30HW	Max	P0	System Normal	1.020	1.008	1.039	1.031	1.023	1.040
		P1.2	2L312	0.935	0.954	0.969	0.986	0.938	0.983

Note: Only the results for the worst contingency are listed

## Appendix C

### One-Line Sketch for the connection of the IC to BC Hydro's transmission system at TLR Substation

Figure C-1 shows the Stations Planning One-Line Sketch for the connection of the IC to BC Hydro's transmission system at the Tumbler Ridge (TLR) Substation.

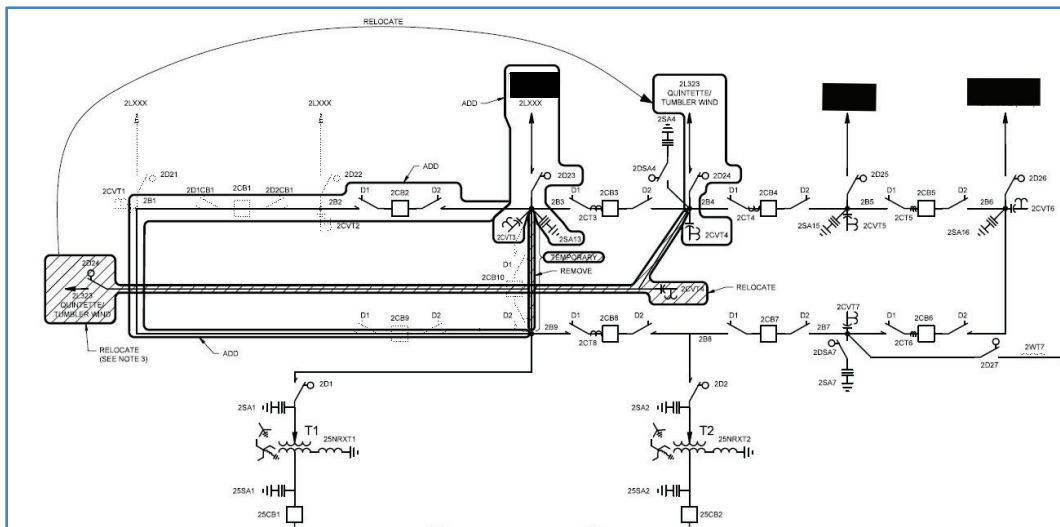


Figure C-1: Stations Planning One-Line Sketch for the connection of the IC to BC Hydro's transmission system.