

6911 Southpoint Drive (B03)
Burnaby, BC
V3N 4X8

November 24, 2025

[REDACTED]

via email [REDACTED]

RE: CEAP IR# 19 – [REDACTED] – Interconnection Feasibility Study

Dear [REDACTED]

Enclosed is the Interconnection Feasibility Study for the proposed Interconnection Request (IR), [REDACTED], submitted under Attachment M-2: Transmission Service and Interconnection Service Procedures for Competitive Electricity Acquisition Process (CEAP) of the Open Access Transmission Tariff (OATT). This letter provides a non-binding good faith estimate of the cost and time to construct the facilities required to interconnect your project to BC Hydro's Transmission System, being the Network Upgrades, based on the findings of the Interconnection Feasibility Study.

Open Access Transmission Tariff

The OATT defines Network Upgrades as additions, modifications, and upgrades to BC Hydro's Transmission System required at or beyond the Point of Interconnection to accommodate the interconnection of the Generating Facility to the BC Hydro's Transmission System. Pursuant to the OATT, BC Hydro will design, procure, construct, install, and own the Network Upgrades. While BC Hydro will pay the costs for the Network Upgrades, the Interconnection Customer provides security for such costs.

Interconnection Study Costs

The Interconnection Customer is responsible for paying the full cost of all Interconnection Studies in cash. Interconnection Study costs vary depending on the scope, complexity, and other factors such as whether any scope is shared with another Interconnection Customer (not applicable to this Interconnection Feasibility Study). The deposit amounts specified in the OATT are not proxy Interconnection Study costs. If actual Interconnection Study costs exceed the deposit amount, the Interconnection Customer must pay the remaining balance in cash. Please refer to the answer for question no. 53 in the posted [Questions & Answers for 2025 Call for Power](#) for typical study cost ranges.

Cost Estimate

Based on the Interconnection Feasibility Study, the non-binding good faith estimated cost (typical accuracy range of +150%/-50%) for Network Upgrades required to interconnect your project is \$24.5 M.

Major Scope of Work Identified:

- Add one new 230 kV circuit breaker and two disconnect switches at Bear Mountain Terminal substation (BMT)
- Add one 230 kV line terminal, including a motor operated disconnect switch, a capacitive voltage transformer, a surge arrester and associated busworks and supporting structures at BMT
- Connect Interconnection Customer's 230 kV transmission line to the new 230 kV terminal at BMT

- Upgrade required substation facilities, infrastructures, and bus work to support new station equipment
- Supply and install required Protection, Control and Telecommunications equipment

Exclusions:

- GST
- Permits
- Right-of-Way & property costs

Key Assumptions:

- Construction by contractor
- 8 months of construction is considered
- Execution of early Engineering and Procurement Agreement
- No expansion of existing stations or control buildings to accommodate new equipment
- No construction during winter season
- Impact Benefit Agreements with First Nations are not considered

Key Risks:

- Expansion of the existing control building may be required leading to increased costs and/or a longer project schedule
- Major equipment delivery presents potential project cost and schedule risks, based on variance in equipment lead times
- No defined supply chain strategy; construction costs may increase depending on delivery method
- Project schedule may be longer than expected, leading to increased overhead costs
- Ground improvements may be required leading to increased construction costs
- Contaminated soil may be encountered leading to increased construction costs
- Cost of materials and major equipment may be affected by market conditions and escalation

Study Limitations and Exclusions***Protection, Control, and Telecommunications***

The Interconnection Feasibility Study does not include a detailed review of the protection, control, and telecommunications system requirements specific to your Interconnection Request. Based on a high-level review, we have identified proxy costs for protection, control, and telecom Network Upgrades drawn from comparable interconnection projects with similar scope and complexity; these proxy costs have been included solely for indicative budgeting purposes. The relative interconnection cost determined by the Interconnection Feasibility Study includes a telecommunications component based on an assumed solution to deliver teleprotection and telecontrol circuit requirements necessary for the Interconnection Request. Protection, control, and telecommunications system requirements will be reviewed in detail in the System Impact Study if you are a successful participant of the CEAP and meet applicable requirements.

For Interconnection Feasibility Study purposes, it is assumed that any applicant-proposed works that could obstruct or impair the performance of existing BC Hydro microwave systems or new links from the proposed Interconnection Customer Interconnection Facilities (ICIF) to the BC Hydro microwave system would be identified and either relocated or repositioned as determined in a System Impact Study if you are a

successful participant of the CEAP and meet applicable requirements. Such works may include, but are not limited to, towers, turbines, dams, support structures, panels, surface materials deposited or redistributed, water surface changes, or vegetation.

Generation Shedding/Curtailment Scheme and Electromagnetic Transient (EMT) Studies

The generation shedding/curtailment scheme reviews (e.g., Remedial Action Scheme (RAS), and a direct transfer trip for anti-islanding scheme) and EMT studies are completed in a System Impact Study. The outcomes of these studies may result in additional requirements, which could include Network Upgrades or ICIF. Any costs associated with completion of these studies, and resulting requirements, are not included in the Interconnection Feasibility Study cost estimate.

Revenue Metering

Please note that revenue metering requirements have not been determined with the Interconnection Feasibility Study. As such, any costs associated with revenue metering and other interconnection components are not included in the cost estimate provided above. Once these requirements are defined, costs that are attributable to the Interconnection Customer are to be paid in cash. For more details on revenue metering requirements and responsibilities, please refer to:

<https://www.bchydro.com/content/dam/BCHydro/customer-portal/documents/distribution/standards/ds-rmr-complex-revenue-metering.pdf>.

Schedule

Based on the Interconnection Feasibility Study, the non-binding good faith estimated in-service date for your Interconnection Request's Network Upgrades is Quarter 3 2031 (calendar year). To achieve this timeline, we may need to expedite certain activities, including engineering design and procurement of long-lead equipment.

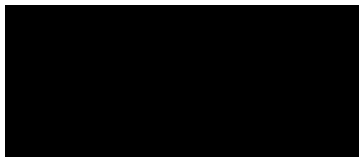
Timely actions required from you to minimize risks to the schedule:

- Submission of additional technical data required for the System Impact Study and Facilities Study
- Submission of any required information or document such as demonstration of Site Control
- Execution of Combined Study Agreement and Standard Generator Interconnection Agreement
- Financial commitments and securities

Please note that changes to your Interconnection Request or delays in data submission or financial commitments may also impact the target in-service date.

If you have any questions, please contact the BC Hydro CEAP team at ceap2025@bchydro.com.

Sincerely,



Manager, Customer Interconnections

BC Hydro

Encl.: CEAP_2025_IR19_ _Feasibility_Study.pdf

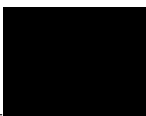
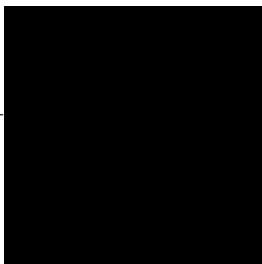



Interconnection Feasibility Study

BC Hydro EGBC Permit to Practice No: 1002449

2025 CEAP IR # 19

Prepared for: 

Prepared by:  


Specialist Engineer, Transmission

Reviewed by: 


Technical Strategic Principle, Transmission
Planning

Accepted by: 


Division Manager, Transmission Planning

Report Metadata

Header: 2025 CEAP IR # 19
Subheader: Interconnection Feasibility Study
Title: [REDACTED]
Subtitle: 2025 CEAP IR # 19
Report Number: 1000-APR-00052
Revision: 0
Confidentiality: Public
Date: 2025 Nov 21
Volume: 1 of 1

Prepared for: [REDACTED]
Prepared by: [REDACTED]
Title: Specialist Engineer, Transmission Planning
Checked by: N/A
Title: N/A
Reviewed by: [REDACTED]
Title: Technical Strategic Principle, Transmission Planning

Related Facilities: BMT
Additional Metadata: Transmission Planning 2025-060
Filing Subcode 1350

Revisions

Revision	Date	Description
0	2025 Nov	Initial release

Disclaimer of Warranty, Limitation of Liability

This report was prepared solely for internal purposes. All parties other than BC Hydro are third parties.

BC Hydro does not represent, guarantee or warrant to any third party, either expressly or by implication:

any information, product or process disclosed, described or recommended in this report.

BC Hydro does not accept any liability of any kind arising in any way out of the use by a third party of any information, product or process disclosed, described or recommended in this report, nor does BC Hydro accept any liability arising out of reliance by a third party upon any information, statements or recommendations contained in this report. Should third parties use or rely on any information, product or process disclosed, described or recommended in this report, they do so entirely at their own risk.

This report was prepared by the British Columbia Hydro And Power Authority ("BCH") or, as the case may be, on behalf of BCH by persons or entities including, without limitation, persons or entities who are or were employees, agents, consultants, contractors, subcontractors, professional advisers or representatives of, or to, BCH (individually and collectively, "BCH Personnel").

This report is to be read in the context of the methodology, procedures and techniques used, BCH's or BCH's Personnel's assumptions, and the circumstances and constraints under which BCH's mandate to prepare this report was performed. This report is written solely for the purpose expressly stated in this report, and for the sole and exclusive benefit of the person or entity who directly engaged BCH to prepare this report. Accordingly, this report is suitable only for such purpose, and is subject to any changes arising after the date of this report. This report is meant to be read as a whole, and accordingly no section or part of it should be read or relied upon out of context.

Unless otherwise expressly agreed by BCH:

- (a) any assumption, data or information (whether embodied in tangible or electronic form) supplied by, or gathered from, any source (including, without limitation, any consultant, contractor or subcontractor, testing laboratory and equipment suppliers, etc.) upon which BCH's opinion or conclusion as set out in this report is based (individually and collectively, "Information") has not been verified by BCH or BCH's Personnel; BCH makes no representation as to its accuracy or completeness and disclaims all liability with respect to the Information;
- (b) except as expressly set out in this report, all terms, conditions, warranties, representations and statements (whether express, implied, written, oral, collateral, statutory or otherwise) are excluded to the maximum extent permitted by law and, to the extent they cannot be excluded, BCH disclaims all liability in relation to them to the maximum extent permitted by law;
- (c) BCH does not represent or warrant the accuracy, completeness, merchantability, fitness for purpose or usefulness of this report, or any information contained in this report, for use or consideration by any person or entity. In addition, BCH does not accept any liability arising out of reliance by a person or entity on this report, or any information contained in this report, or for any errors or omissions in this report. Any use, reliance or publication by any person or entity of this report or any part of it is at their own risk; and
- (d) In no event will BCH or BCH's Personnel be liable to any recipient of this report for any damage, loss, cost, expense, injury or other liability that arises out of or in connection with this report including, without limitation, any indirect, special, incidental, punitive or consequential loss, liability or damage of any kind.

Copyright Notice

Copyright and all other intellectual property rights in, and to, this report are the property of, and are expressly reserved to, BCH. Without the prior written approval of BCH, no part of this report may be reproduced, used or distributed in any manner or form whatsoever.

Contributors

The following accept responsibility for the content in the specified sections. Professionals apply their signature and/or seal as appropriate.


Section:


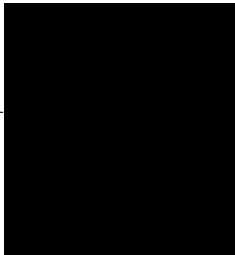
Entire report
except listed
below

Discipline:

Transmission Planning

Contributed by:




Specialist Engineer, Transmission
Planning 


Section:


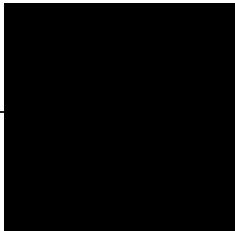
5.2, 5.3

Discipline:

Stations Planning

Contributed by:




Specialist Engineer, Station Planning 

Executive Summary

[REDACTED], the Interconnection Customer (IC), requests to interconnect its [REDACTED] - 2025 CEAP IR # 19 - to the BC Hydro system. [REDACTED] has forty-four (44) [REDACTED] type-3 wind turbine generators, adding a total installed capacity of 250.8 MW with a maximum power injection of 240.1 MW into the BC Hydro system at the proposed Point of Interconnection (POI). The IC has proposed to connect their wind project to BC Hydro transmission system at the POI, the 230 kV bus of the Bear Mountain Terminal substation (BMT).

The IC's wind project will be connected via a new 230 kV, approximately 13 km, customer-built transmission line (temporarily designated as 2LXXX) from the POI.

To interconnect the [REDACTED] and its facilities to the BCH Transmission System at the proposed POI, this Feasibility Study has made the recommendations and conclusions as follow:

1. The proposed POI at the 230 kV BMT station is acceptable to interconnect the IC's generating project to the BCH system.

One new 230 kV line position at BMT is required to interconnect the proposed [REDACTED]

2. No thermal overloads or voltage constraints have been identified under system normal condition (P0).
3. With the connection of [REDACTED] the following thermal overloads have been identified under single contingency conditions:

- 2L308 thermal overloads under the single contingency of loss of 2L392A or SBK_2CB21 (or 2CB22) breaker internal fault (P2).
- Gordon M. Shrum G.S. (GMS) 500/230 kV transformers T13 or T14 overloads under single contingencies of loss of GMS 500/230 kV T14 or T13 or internal breaker fault GMS-1CB4 or 1CB5, 1CB7.

The [REDACTED] is required to participate in and modify the existing Peace Area Wind Farm Gen Shedding Remedial Action Scheme (RAS).

- Thermal overloads on 500 kV lines 5L1, 5L2 and 5L3 under single contingencies loss of one of 500 kV line, 5L3, 5L4, or 5L7.

The [REDACTED] is required to participate in the G.M. Shrum Area Gen Shedding RAS.

Further details of the RASs will be studied under System impact study (SIS) stage, if applicable.

4. The [REDACTED] is required to install anti-islanding protection within its facility to disconnect the IC's generating plant from the grid when an inadvertent island with the local load forms. The anti-islanding protection shall be configured in the manner that does not compromise the required ride-through performance.
5. A Direct Transfer Trip (DTT) protection scheme is required to isolate the IC's wind project at the IC's entrance circuit breaker to avoid potential islanding operations with the existing or future loads.
6. The [REDACTED] is required to have the dynamic reactive power capability at a minimum of +/- 33% of its MPO at the high voltage side of the IC's switchyard over the full MW operating range, per BC Hydro's TIR Section 6.4.2. Based on the IC-submitted PSS/E model, the proposed [REDACTED] meets the reactive capability requirement above.
7. The "STATCOM option" for the proposed type-3 WTGs is required so that each turbine can provide reactive power capability at zero MW output. BC Hydro recognizes that Type-3 WTGs with the STATCOM option have an inherent limitation—providing only partial reactive power capability during turbine standstill.
8. Fast Frequency Response, also known as Virtual Inertia Control (VIC) in the proposed wind turbines, is required at the [REDACTED]. The proposed wind turbine generators, when equipped with the VIC option, are expected to temporarily boost the MW output to limit the system frequency drop during a major frequency event. The VIC settings should be determined in coordination with BC Hydro in the later stage of the interconnection process.

The above conclusions are made based on the IC's input data and study assumptions listed in Section 4, which represent the best available information on October 14, 2025.

A non-binding good faith cost for required network upgrades and estimated schedule for construction are included in a separate letter to the IC.

Please note that, this Feasibility Study report does not include the descriptions of Protection, Control, and Telecommunications requirements and the associated upgrade scopes; however, as discussed in Section 2 “Purpose and Scopes of Study, the associated cost implications are captured and delivered in the cover letter to the IC”.

Contents





Executive Summary	vi
1 Introduction	1
2 Purpose and Scopes of Study	3
3 Standard and Criteria	4
4 Assumptions and Conditions	5
5 System Studies and Results	6
5.1 Power Flow Study Results	6
5.1.1 Thermal Overload Analysis	6
5.1.2 Steady-State Voltage Analysis	7
5.1.3 Reactive Power Capability Evaluation	7
5.1.4 Anti-Islanding Requirements	8
5.1.5 Other Performance Requirements	8
5.2 Fault Analysis	8
5.3 Stations Requirements	8
6 Cost Estimate and Schedule	10
7 Conclusions	11

Appendices

Appendix A	Schematic Diagram of the IC's Project
Appendix B	Power Flow Study Results
Appendix C	One-Line Sketch for Switching Station

Acronyms

The following are acronyms used in this report.

BCH	BC Hydro
BMT	Bear Mountain Terminal
CEAP	Competitive Electricity Acquisition Process
COD	Commercial Operation Date
DTT	Direct Transfer Trip
DAW	Dawson Creek Substation
EGB	East Groundbirch
ERIS	Energy Resource Interconnection Service
FeS	Feasibility Study
IBR	Inverter-Based Resources
IC	Interconnection Customer
IR	Interconnection Request
GMS	Gordon M. Shrum G.S.
LAPS	Local Area Protection Schemes
MPO	Maximum Power Output
NERC	North American Electric Reliability Corporation
NRIS	Network Resource Interconnection Service
OATT	Open Access Transmission Tariff
POI	Point of Interconnection
PRES	Peace Region Electric Supply
RAS	Remedial Action Scheme
SGB	Shell Groundbirch Substation
SBK	South Bank Substation
SLS	Sundance Lakes Substation
TIR	BC Hydro “60 KV to 500 kV Technical Interconnection Requirements for Power Generators”
	 Terminal Station
	 Station
VIC	Virtual Inertia Control
WECC	Western Electricity Coordinating Council

WTG Wind Turbine Generator

1 Introduction

Table 1-1 below summarizes the project reviewed in this Feasibility Study.

Table 1-1 Summary of Project Information

Project Name	[REDACTED]	
Name of Interconnection Customer (IC)	[REDACTED]	
Point of Interconnection (POI)	230 kV bus of BMT	
IC's Proposed COD	1st November 2029	
Type of Interconnection Service	NRIS <input checked="" type="checkbox"/>	ERIS <input type="checkbox"/>
Maximum Power Injection (MW)	240.1 MW (Summer)	240.1 MW (Winter)
Number of Turbines	44 x 5.7 MW WTGs	
Plant Fuel	Wind	

[REDACTED] the Interconnection Customer (IC), requests to interconnect its [REDACTED] - 2025 CEAP IR # 19 - to the BC Hydro system. [REDACTED] has forty-four (44) [REDACTED] type-3 wind turbine generators, adding a total installed capacity of 250.8 MW with a maximum power injection of 240.1 MW into the BC Hydro system at the proposed Point of Interconnection (POI). The IC has proposed to connect their wind project to BC Hydro transmission system at the POI, the 230 kV bus of the Bear Mountain Terminal substation (BMT). The [REDACTED] will be interconnected with the BC Hydro transmission system at the POI via an approximately 13 km customer-built 230 kV line. The IC's proposed commercial operation date (COD) is November 1, 2029.

The Peace Region transmission system consists of 230 kV and 138 kV transmission infrastructures supplied from Gordon M. Shrum G.S.(GMS) and South Bank substation (SBK), which are the major sources of supply to the Peace Region transmission system. Figure 1-1 shows the Peace region transmission system diagram.

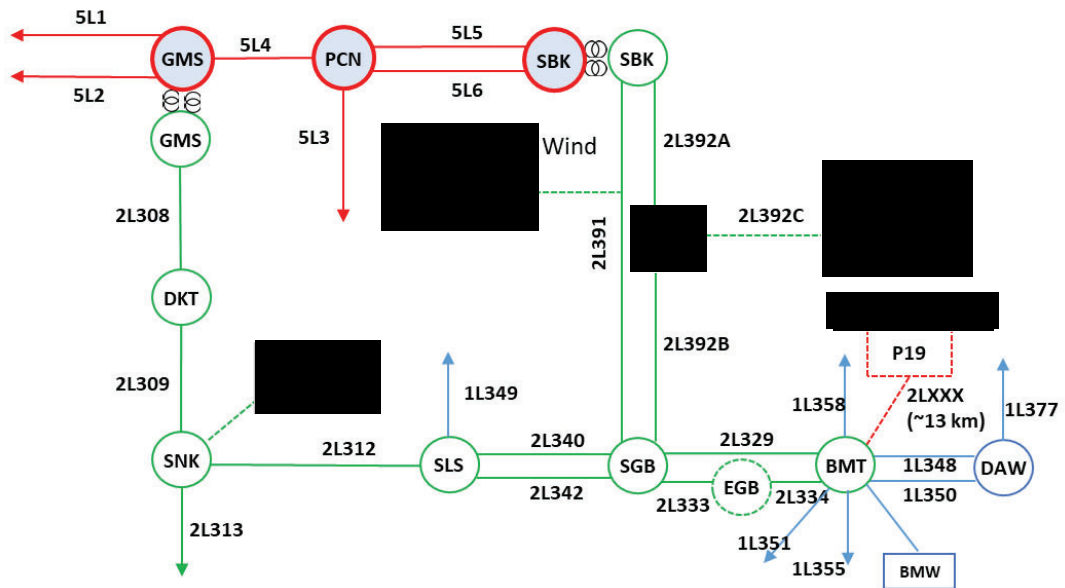


Figure 1-1: Peace Region Transmission System Diagram

2 Purpose and Scopes of Study

This Feasibility Study is a preliminary evaluation of the system impact of interconnecting the proposed project to the BC Hydro system based on power flow and short circuit analysis in accordance with BCH's Open Access Transmission Tariff (OATT) and produces the estimated cost of required Network Upgrades and the implementation schedule.

Per OATT, the Feasibility Study is performed individually for each of the participating projects in the CEAP process and focuses specifically on the BC Hydro regional transmission system where the proposed generating project is connected and affects.

This is a "limited scope" study which is restricted to power flow studies of P0, P1 and P2 planning events as defined in TPL-001-4 and short circuit analysis. The study does not address other technical aspects such as transient stability and switching transients and impact of multiple contingencies. These subjects will be addressed in subsequent System Impact Study if the project proceeds further. In addition, any potential impacts to the adjacent external systems to BC Hydro would be addressed in subsequent detailed and coordinated studies with the relevant adjacent entities if the proposed generator project proceeds further.

Please note that, due to the compressed study timeline for CEAP 2025 Feasibility Study, this report does not include the descriptions of the Protection, Control, and Telecommunication requirements and the associated upgrade scopes. Instead, the network upgrades associated with Protections, Controls and Telecommunications are incorporated with cost estimates in a separate cover letter to the IC.

3 Standard and Criteria

The Feasibility Study is performed in compliance with the North American Electric Reliability Corporation (NERC) and Western Electricity Coordinating Council (WECC) reliability standards, and the BCH interconnection requirements in the TIR, and upon the ratings of the existing BCH transmission facilities described in Operating Orders, specifically:

- NERC standards: TPL-001-4 and FAC-002-3 relevant to the scope of this Feasibility Study.
- WECC criteria TPL-001-WECC-CRT-4 Transmission System Planning Performance, July 1, 2023.
- BC Hydro's 60 kV to 500 kV Technical Interconnection Requirements for Power Generators, Rev 2.1.1, Effective: Sept 22, 2025.
- BC Hydro Operating Order 5T-10, Ratings for All Transmission Circuits 60 kV or Higher, Sept 17, 2025.
- BC Hydro Operating Order 5T-14, Ratings for All Transmission and Distribution Transformer, Sept 22, 2025.
- BC Hydro System Operating Order 7T-22 System Voltage Control, Sept 19, 2023.

4 Assumptions and Conditions

This Feasibility Study is performed based on the IC's submitted data and information available to BC Hydro on Oct 14, 2025, for the study purpose. Assumptions are made wherever the IC's input is unavailable. Appendix A shows the schematic diagram of the IC's project IC's project used in the study model.

The power flow study cases used in this Feasibility Study are established based upon the BC Hydro's base resource plan and load forecasts available at the time of performing the study, which includes existing and future generators, transmission facilities, and loads in addition to the subject interconnection project in this study. Applicable seasonal conditions and the appropriate study years for the study planning horizon are also incorporated. Additional assumptions are listed as follows.

- 1) The generation in the Peace region area are dispatched to the patterns that stress the transmission system in the study area. In these patterns, the associated generators are typically set to Maximum Power Outputs (MPO) unless otherwise specified.
- 2) The 2024 Distribution Substation Load Forecast, 2025 Transmission Voltage Customer (TVC) Load Forecast and 2025 System Peak Forecast are used.
- 3) September 2024 Base Resource Plan.
- 4) 200 MW [REDACTED] will be in service on September 30, 2031, and 200 MW [REDACTED] will be in service on October 1, 2030.
- 5) A new 56 MW earlier-queued generation interconnection project will be in service on October 31, 2028.
- 6) 29HW, 30LS, 32HS, and 32LS are used as base case in the study to evaluate system impact after [REDACTED] plant interconnection.
- 7) The Bear Mountain Terminal T4 will be in service by March 2027.
- 8) 1L377 is normally open between Parkland Substation (PLD) and Tower 03/07 Substation (ET3).
- 9) All new TVC load interconnection and associated system reinforcements are modeled in this study.

5 System Studies and Results

Based upon the IC's submitted information and the area system conditions, it is acceptable to interconnect the customer's generating project to the BCH system at the proposed POI, the 230 kV bus of the BMT, via an approximately 13 km customer-built 230 kV line.

5.1 Power Flow Study Results

Power flow studies were performed to evaluate whether the IC's generating project would cause any unacceptable system performance (e.g. equipment overloads, steady-state voltage violation and voltage instability) and to determine the system reinforcement requirement based on steady state performance analysis.

The study focuses on the base scenarios - 29HW/30LS/32LS/32HS system conditions that includes all the higher-queued generating projects ([REDACTED] and a new generation project) in the Peace region. These base cases were prepared based on factors such as load conditions, seasonal variation in ambient temperatures, and generation patterns that stress the transmission system.

The studies were performed for system normal conditions and under critical system contingencies specified in the P1 and P2 events by NERC TPL-001-4. Study results are summarized below.

5.1.1 Thermal Overload Analysis

For all the studied scenarios (29HW, 30LS, 32LS, and 32HS), the study shows that the addition of [REDACTED] would not cause any thermal overloads under system normal condition.

With the connection of [REDACTED] the following thermal overloads have been identified under single contingencies:

- 2L308 thermal overloads under the single contingency of loss of 2L392A (SBK-[REDACTED]) or SBK_2CB21 (or 2CB22) breaker internal fault (P2).
- GMS 500/230 kV transformer T13 or T14 overloads under single contingencies of loss of GMS 500/230 kV T14 or T13 or internal breaker fault GMS-1CB4 (or 1CB5, 1CB7).

The [REDACTED] is required to participate in and modify the existing Peace Area Wind Farm Gen Shedding Remedial Action Scheme (RAS).

- Thermal overloads of 500 kV lines 5L1, 5L2 and 5L3 under single contingencies loss of one of 500 kV line, 5L3, 5L4, or 5L7. These existing overloads are currently mitigated by the G.M. Shrum Area Gen Shedding RAS. The [REDACTED] is required to participate in the G.M. Shrum Area Gen Shedding RAS.

The detailed RAS requirements will be confirmed during the System Impact Study (SIS) stage, if necessary.

Details of the thermal overload analysis are provided in Appendix B.

5.1.2 Steady-State Voltage Analysis

With the connection of the IC's project, the steady-state voltage performance under system normal and single contingency conditions is acceptable for all the study scenarios (29HW, 30LS, 32LS, and 32HS). Appendix B shows the details in the steady-state voltage study results.

5.1.3 Reactive Power Capability Evaluation

The BC Hydro TIR requires IBR power plant to have the dynamic reactive power capability at a minimum of +/- 33% of its MPO at the high voltage side of the IC's switchyard over the full MW operating range.

Based on the power flow model data submitted by the IC, the proposed [REDACTED] [REDACTED] would be capable to meet the BC Hydro's reactive capability requirement at the plant's maximum MW output, which is subjected to further verification in the next stage of the interconnection process.

In addition, according to the IC-provided reactive capability data, the proposed WTG would provide +1.7 MVAR to -1.9 MVAR reactive capability at the zero MW output if the turbine's "STATCOM" function is enabled. This function needs to be re-confirmed if the IC's project proceeds to next stage of the interconnection process.

5.1.4 Anti-Islanding Requirements

██████████ is not arranged for islanded operation. In addition, the IC is required to install anti-islanding protection within its facility to disconnect the IC's wind farm from the grid when an inadvertent island with the local loads' forms.

A Direct Transfer Trip (DTT) protection scheme is required to isolate the IC's wind project at the IC's entrance circuit breaker to avoid potential islanding operations with the existing or future loads.

5.1.5 Other Performance Requirements

Fast Frequency Response, also known as Virtual Inertia Control (VIC) in the proposed wind turbines, is required at the ██████████. The proposed wind turbine generators, when equipped with the VIC option, are expected to temporarily boost the MW output to limit the system frequency drop during a major frequency event. The VIC settings should be determined in coordination with BC Hydro in the later stage of the interconnection process.

5.2 Fault Analysis

The short circuit analysis in the FeS is based upon the latest BC Hydro system model, which includes the generating facility information and associated impedance data provided by the IC. A more detailed study will be performed at the system impact study stage, if needed.

5.3 Stations Requirements

To connect the IC's project, the scope of work at BMT station involves:

- Add one new 230 kV circuit breaker and two disconnect switches inside BMT station fence.
- Add one 230 kV line terminal, including a motor operated disconnect switch, a CVT, a SA and associated busworks and supporting structures inside BMT station fence.
- Install associated P&C, station service and other equipment.
- Connect customer-built transmission line to the new 230 kV terminal at BMT.

- Upgrade station grounding system as necessary.

The station planning study at BMT is based on the following assumptions:

- It is assumed that there is sufficient space to add associated P&C and station service equipment in the existing BMT control building.
- Anti-islanding projection will be in place to isolate the IC's wind project to avoid potential islanding operations with the existing loads.

Refer to the sketch in Appendix C for the work scope at BMT.

6 Cost Estimate and Schedule

The non-binding good faith estimated cost and time to construct the Network Upgrades required to interconnect the proposed project will be provided in a separate letter to the IC.

7 Conclusions

To interconnect the [REDACTED] and its facilities to the BCH Transmission System at the POI, this Feasibility Study has identified the following conclusions and requirements:

1. The proposed POI at the 230 kV BMT station is acceptable to interconnect the customer's generating project to the BCH system.

One new 230 kV line position at BMT is required to interconnect the proposed [REDACTED]

2. No thermal overloads or voltage constraints have been identified under system normal condition (P0).
3. With the connection of [REDACTED] the following thermal overloads have been identified under single contingency conditions:

- 2L308 overloads under the single contingency of loss of 2L392A (SBK-[REDACTED]) or SBK_2CB21 (or 2CB22) breaker internal fault (P2).
- GMS 500/230 kV transformers T13 or T14 thermal overloads under single contingencies of loss of GMS 500/230 kV T14 or T13 or internal breaker failure GMS-1CB4 or 1CB5, 1CB7.

The [REDACTED] is required to participate in and modify the existing Peace Area Wind Farm Gen Shedding RAS.

- Thermal overloads on 500 kV lines 5L1, 5L2 and 5L3 under single contingencies loss of one of 500 kV line, 5L3, 5L4, or 5L7. The [REDACTED] is required to participate in the G.M. Shrum Area Gen Shedding RAS.

Further details of the RASs will be studied under System impact study stage, if applicable.

4. The [REDACTED] is required to install anti-islanding protection within its facility to disconnect the IC's generating plant from the grid when an inadvertent island with the local load forms. The anti-islanding protection shall be configured in the manner that does not compromise the required ride-through performance.
5. A Direct Transfer Trip protection scheme is required to isolate the IC's wind project at the IC's entrance circuit breaker to avoid potential islanding operations with the existing or future loads.

6. The [REDACTED] is required to have the dynamic reactive power capability at a minimum of +/- 33% of its MPO at the high voltage side of the IC's switchyard over the full MW operating range, per BC Hydro's TIR Section 6.4.2. Based on the IC-submitted PSS/E model, the proposed [REDACTED] meets the reactive capability requirement above.
7. The "STATCOM option" for the proposed type-3 WTGs is required so that each turbine can provide reactive power capability at zero MW output. BC Hydro recognizes that Type-3 WTGs with the STATCOM option have an inherent limitation—providing only partial reactive power capability during turbine standstill.
8. Fast Frequency Response, also known as Virtual Inertia Control (VIC) In the proposed wind turbines, is required at the [REDACTED]. The proposed wind turbine generators, when equipped with the VIC option, are expected to temporarily boost the MW output to limit the system frequency drop during a major frequency event. The VIC settings should be determined in coordination with BC Hydro in the later stage of the interconnection process.

Appendix A

Schematic Diagram of the IC's Project

Figure A-1 shows the schematic diagram for the [REDACTED].

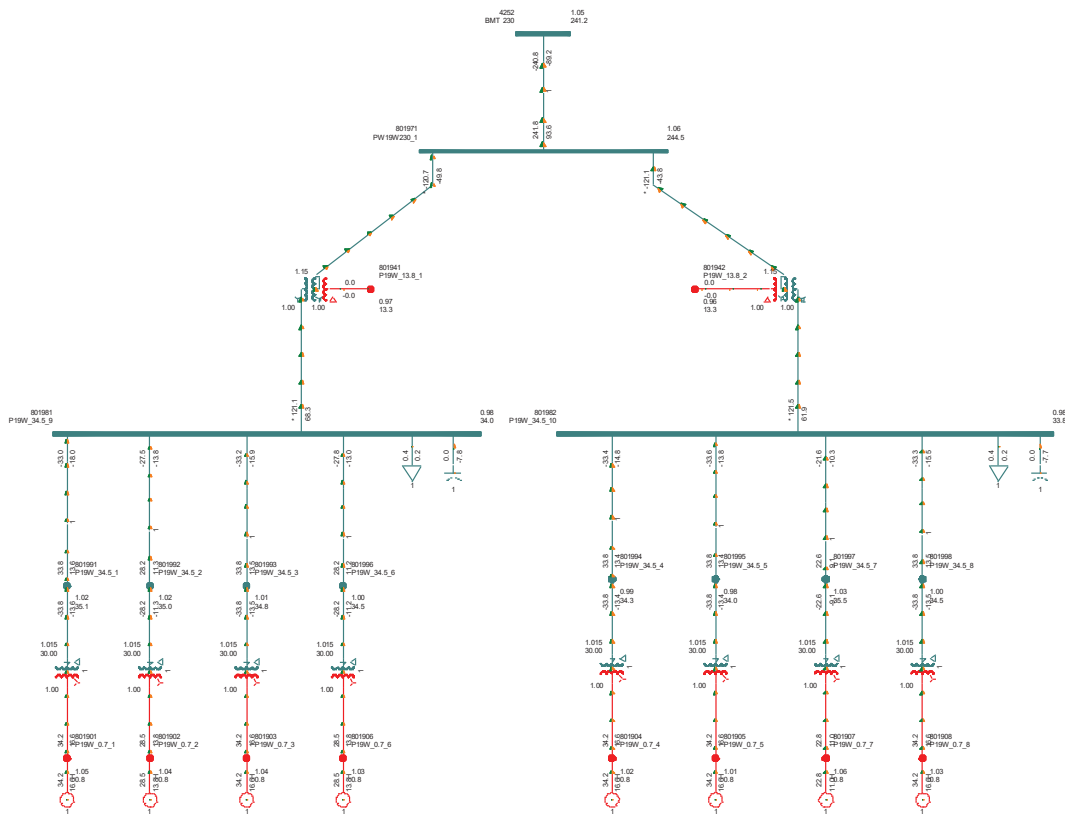


Figure A-1: [REDACTED] Plant Schematic Diagram.

Appendix B

Power Flow Study Results

Base Scenario (29HW/30LS/32HS/32LS)

Table B-1: Thermal Overload Study Results

Cases	IC's Gen Output (MW)	Contingency		Branch Loading (Amps/MVA)						
				5L1	2L312	2L308	2L329	2L333	2L392	GMS T14
		Cate.	Description	GMS-KDY	SNK-SLS	GMS-DKT	SGB-BMT	SGB-EGB	SBK-SGB	(MVA)
Winter Ratings				3000	1351	1359	2000	2000	1667	356
29HW	Max	P0	System Normal	1680.3 56.0%	566.0 41.9%	709.7 52.2%	98.0 4.9%	98.1 4.9%	169.2 10.2%	131.3 36.9%
		P1	2L308	1671.8 55.7%	1272.3 94.2%	N/A	110.4 5.5%	110.5 5.5%	474.1 28.4%	12.9 3.6%
		P1	2L312	1685.8 56.2%	N/A	1274.6 93.8%	94.2 4.7%	94.2 4.7%	82.0 4.9%	239.2 67.2%
		P1	2L333 (SGB-EGB)	1680.5 56.0%	565.1 41.8%	709.8 52.2%	187.7 9.4%	N/A	170.6 10.2%	131.3 36.9%
		P1	GMS T13	1680.4 56.0%	631.7 46.8%	642.6 47.3%	98.9 4.9%	99.0 4.9%	196.8 11.8%	236.9 66.5%
		P1	5L3	2609.2 87.0%	532.1 39.4%	761.5 56.0%	104.0 5.2%	104.0 5.2%	144.0 8.6%	138.9 39.0%
		P1	2L334 (BMT-EGB)	1680.5 56.0%	565.1 41.8%	709.9 52.2%	184.1 9.2%	11.8 0.6%	170.5 10.2%	131.3 36.9%
		P1	2L329	1680.6 56.0%	564.7 41.8%	710.0 52.2%	N/A	184.9 9.2%	171.3 10.3%	131.3 36.9%
Summer Ratings				2244	1066	1073	1954	1954	1343	300
30LS	Max	P0	System Normal	1755.0 78.2%	506.4 47.5%	803.5 74.9%	196.1 10.0%	195.8 10.0%	276.4 20.6%	145.9 48.6%
		P1	2L308	1744.9 77.8%	1309.5 122.8%	N/A	202.9 10.4%	203.0 10.4%	625.3 46.6%	16.0 5.3%
		P1	2L312	1759.7 78.4%	N/A	1311.7 122.2%	195.9 10.0%	194.5 10.0%	61.4 4.6%	242.8 80.9%
		P1	2L333 (SGB-EGB)	1755.1 78.2%	505.4 47.4%	803.6 74.9%	391.5 20.0%	N/A	277.4 20.7%	145.9 48.6%
		P1	GMS T13	1754.6 78.2%	577.1 54.1%	731.4 68.2%	196.2 10.0%	196.1 10.0%	308.9 23.0%	264.7 88.2%
		P1	5L3	2745.4 122.3%	471.0 44.2%	859.2 80.1%	198.5 10.2%	198.6 10.2%	251.7 18.7%	153.4 51.1%
		P1	2L334 (BMT-EGB)	1755.1 78.2%	505.4 47.4%	803.6 74.9%	392.6 20.1%	11.8 0.6%	277.3 20.7%	145.9 48.6%
		P1	2L329	1755.2 78.2%	504.9 47.4%	803.7 74.9%	N/A	391.9 20.1%	278.0 20.7%	145.9 48.6%
32LS	Max	P0	System Normal	1863.7 83.1%	377.1 35.4%	936.2 87.3%	197.3 10.1%	196.3 10.0%	652.0 64.9%	170.3 56.8%
		P0	2L308	1849.4 82.4%	1308.2 122.7%	N/A	200.2 10.2%	200.3 10.3%	963.8 96.0%	17.5 5.8%
		P1	2L312	1868.1 83.3%	N/A	1311.2 122.2%	197.3 10.1%	195.8 10.0%	527.3 52.5%	241.3 80.4%

Cases	IC's Gen Output (MW)	Contingency		Branch Loading (Amps/MVA)						
				5L1	2L312	2L308	2L329	2L333	2L392	GMS T14
		Cate.	Description	GMS-KDY	SNK-SLS	GMS-DKT	SGB-BMT	SGB-EGB	SBK-SGB	(MVA)
		P1	2L333	1863.6 83.0%	376.1 35.3%	936.0 87.2%	393.4 20.1%	N/A	651.8 64.9%	170.3 56.8%
		P1	GMS T13	1863.1 83.0%	457.7 42.9%	855.0 79.7%	197.3 10.1%	196.4 10.1%	681.9 67.9%	309.5 103.2%
		P1	2L392A (SBK- █)	1864.8 83.1%	229.4 21.5%	1090.7 101.7%	197.4 10.1%	196.5 10.1%	N/A	199.9 66.6%
		P1	5L3	2921.3 130.2%	348.6 32.7%	993.9 92.6%	197.4 10.1%	196.8 10.1%	646.2 64.4%	177.3 59.1%
		P1	2L334 (BMT- EGB)	1863.6 83.0%	376.1 35.3%	936.1 87.2%	394.8 20.2%	11.8 0.6%	651.8 64.9%	170.3 56.8%
		P1	2L329	1863.6 83.0%	375.6 35.2%	936.1 87.2%	N/A	393.6 20.1%	651.9 64.9%	170.3 56.8%
		P2	SBK_2CB21	1865.4 83.1%	186.5 17.5%	1138.4 106.1%	197.4 10.1%	196.5 10.1%	N/A	209.0 69.7%
32HS	Max	P0	System Normal	1809.6 80.6%	432.6 40.6%	879.0 81.9%	125.9 6.4%	125.9 6.4%	596.6 59.4%	154.9 51.6%
		P1	2L308	1795.8 80.0%	1308.1 122.7%	N/A	130.4 6.7%	130.4 6.7%	887.4 88.4%	21.5 7.2%
		P1	2L312	1814.4 80.9%	N/A	1311.0 122.2%	124.7 6.4%	124.7 6.4%	452.4 45.1%	237.3 79.1%
		P1	2L333	1809.5 80.6%	431.8 40.5%	878.9 81.9%	249.0 12.7%	N/A	596.6 59.4%	154.9 51.6%
		P1	GMS T13	1809.0 80.6%	507.2 47.6%	803.8 74.9%	126.1 6.5%	126.2 6.5%	622.7 62.0%	281.1 93.7%
		P1	2L392A (SBK- █)	1810.9 80.7%	295.1 27.7%	1020.0 95.1%	126.3 6.5%	126.4 6.5%	N/A	182.2 60.7%
		P1	5L3	2817.5 125.6%	403.4 37.8%	933.6 87.0%	126.8 6.5%	126.8 6.5%	592.7 59.0%	162.0 54.0%
		P1	2L334 (BMT- EGB)	1809.6 80.6%	431.8 40.5%	878.9 81.9%	248.3 12.7%	11.8 0.6%	596.6 59.4%	154.9 51.6%
		P1	2L329	1809.6 80.6%	431.4 40.5%	879.0 81.9%	N/A	248.5 12.7%	596.6 59.4%	154.9 51.6%
		P2	SBK_2CB21	1811.4 80.7%	257.0 24.1%	1060.3 98.8%	126.3 6.5%	126.4 6.5%	N/A	190.0 63.3%

Table B-2: Steady-State Voltage Study Results

Case	IC's Generator Output (MW)	Contingency		Bus Voltage (PU)			
		Cate.	Description	SGB 230	BMT 230	BMT 138	DAW 138
29HW	Max	P0	System Normal	1.033	1.036	1.014	1.019
		P1	2L308	1.018	1.022	1.000	1.005
		P1	2L312	1.039	1.041	1.019	1.024
		P1	2L333 (SGB-EGB)	1.038	1.038	1.016	1.022
		P1	GMS T13	1.032	1.035	1.013	1.018
		P1	5L3	1.026	1.029	1.007	1.012
		P1	2L334 (BMT-EGB)	1.029	1.037	1.015	1.020

Case	IC's Generator Output (MW)	Contingency		Bus Voltage (PU)			
		Cate.	Description	SGB 230	BMT 230	BMT 138	DAW 138
		P1	2L329	1.032	1.036	1.014	1.020
30LS	Max	P0	System Normal	1.031	1.032	1.007	1.015
		P1	2L308	1.013	1.016	0.991	0.999
		P1	2L312	1.038	1.039	1.013	1.021
		P1	2L333	1.033	1.032	1.007	1.015
		P1	GMS T13	1.030	1.031	1.006	1.014
		P1	5L3	1.023	1.025	1.000	1.008
		P1	2L334 (BMT-EGB)	1.029	1.031	1.006	1.014
		P1	2L329	1.029	1.030	1.005	1.013
32LS	Max	P0	System Normal	1.035	1.036	1.010	1.018
		P1	2L308	1.022	1.024	0.999	1.007
		P1	2L312	1.039	1.039	1.013	1.021
		P1	2L333	1.036	1.036	1.010	1.018
		P1	GMS T13	1.035	1.035	1.010	1.018
		P1	2L392-A (SBK-)	1.034	1.035	1.009	1.017
		P1	5L3	1.033	1.033	1.008	1.016
		P1	2L334 (BMT-EGB)	1.033	1.034	1.009	1.017
		P1	2L329	1.033	1.034	1.009	1.016
		P2	SBK_2CB21	1.034	1.034	1.009	1.017
32HS	Max	P0	System Normal	1.035	1.036	1.013	1.020
		P1	2L308	1.026	1.028	1.004	1.011
		P1	2L312	1.038	1.039	1.015	1.023
		P1	2L333	1.038	1.038	1.014	1.021
		P1	GMS T13	1.035	1.036	1.012	1.019
		P1	2L392-A (SBK-)	1.034	1.035	1.012	1.019
		P1	5L3	1.033	1.035	1.011	1.018
		P1	2L334 (BMT-EGB)	1.033	1.036	1.012	1.020
		P1	2L329	1.034	1.036	1.012	1.019
		P2	SBK_2CB21	1.034	1.035	1.012	1.019

Appendix C

One-Line Sketch for Switching Station

Figure C-1 shows the Stations Planning One-Line Sketch for the Switching Station BMT.

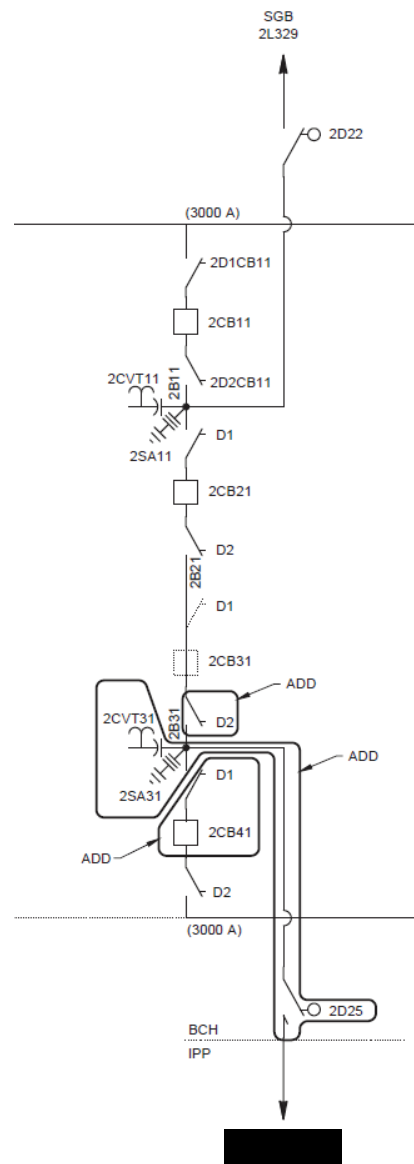


Figure C-1: Stations Planning One-Line Sketch for the Switching Station BMT