

Mid pole wireless attachment

As-built requirements

GENERAL PHOTO REQUIREMENTS

- Provide clear digital pictures (JPEG Format with a file size of 1 MB or less)
- Name each photo using the format: **Sequence#-Pole#-Description**
(i.e. P1-1234567-PSE(1).jpg or P5-1234567-North.jpg or P5-1234567-Tag.jpg)

WIRELESS EQUIPMENT

Please include the following:

- Photo of the wireless equipment showing mounting height and orientation
 - Capture the whole pole in the photo—from ground to top of pole
- Photo of label showing owners equipment ID, company name and emergency contact number
- Photo of the pole tag
- Photo of grounding/bonding
- Photo of weatherhead installation

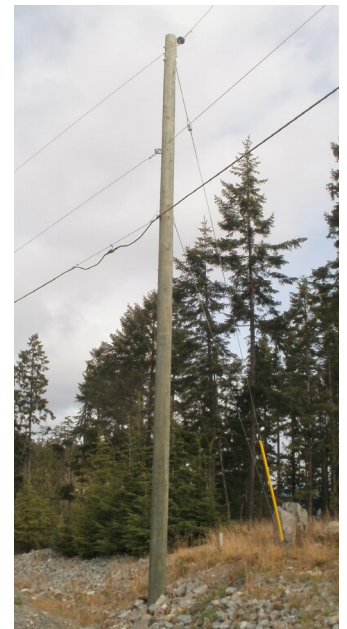
WIRE-LINE ATTACHMENTS

Please include the following:

- Photo of the wireline attachment on each pole showing relative mounting height/location
 - Capture the whole pole in the photo—from ground to top of pole
 - Include pictures “looking down the line” where practical as well as a photo of the pole tag for each pole contacted
- Photo of Licensee tag identifying ownership at each pole and demonstrating that the tag is clearly visible from the ground-level
- Photo of any down-guys showing their attachment to anchors
- Photo of any dips/laterals showing conduit installation and identification labels on the pilaster



Mid pole wireless photo sample



Wire-line photo sample

BC Hydro requires 3rd Party Licensee As-Built information for the following reasons:

1. Confirmation that installations meet CSA and BC Hydro safety and standards requirements
2. Ensure what is recorded in our GIS matches what is installed in the field
3. Ensure that our billing accurately captures in-field installations